

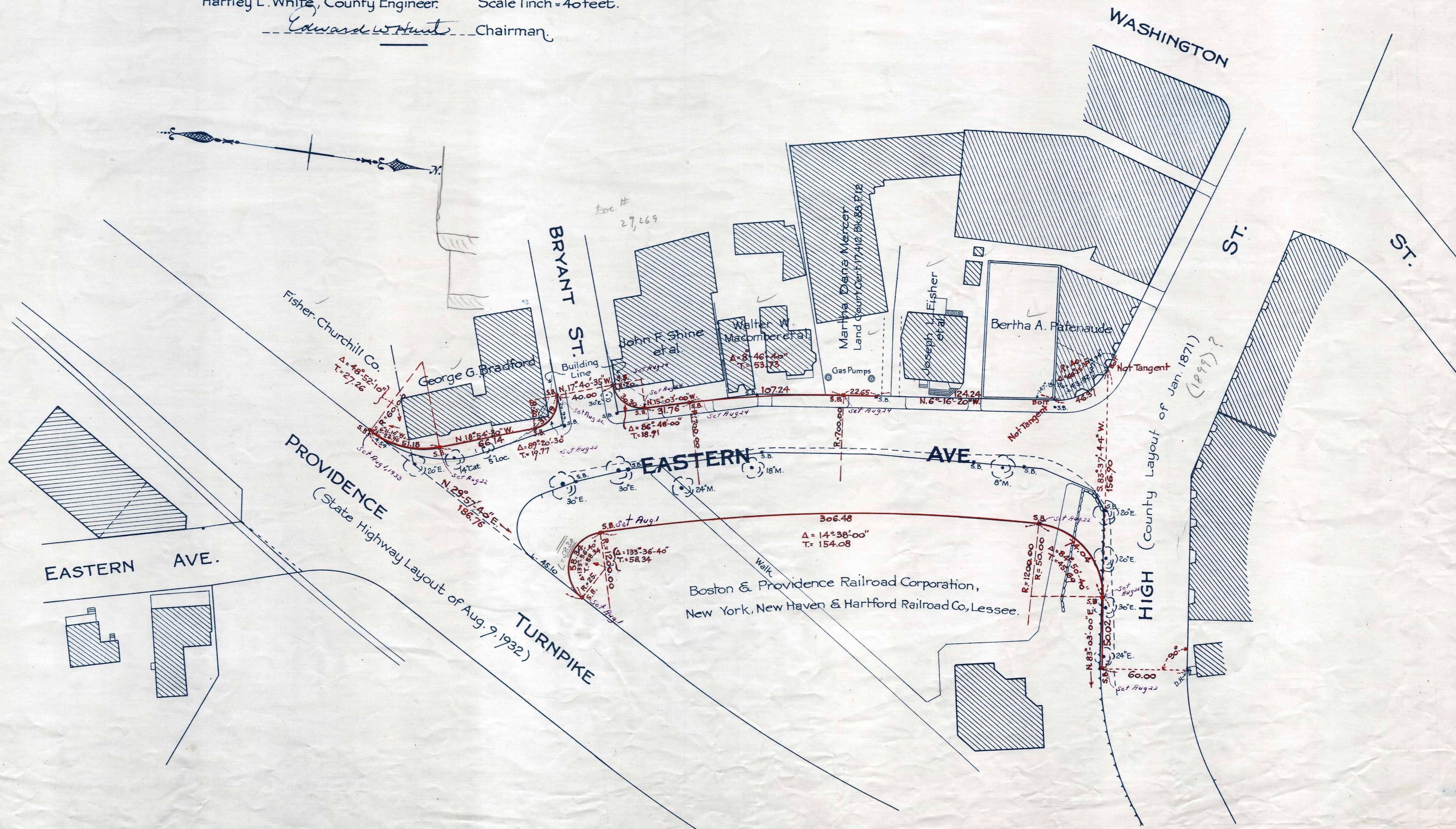
Plan showing the Relocation and Widening
of

EASTERN AVE., DEDHAM

between Providence Turnpike and High St.
as made by the Norfolk County Commissioners
by Return dated Aug. 1, 1933.

Hartley L. White, County Engineer. Scale 1 inch = 40 feet.

Edward W. Hunt Chairman



Date of Entry Aug. 10, 1933.

R.B. 117-345
TAKING 1798-46
Rel. - 8-14-33