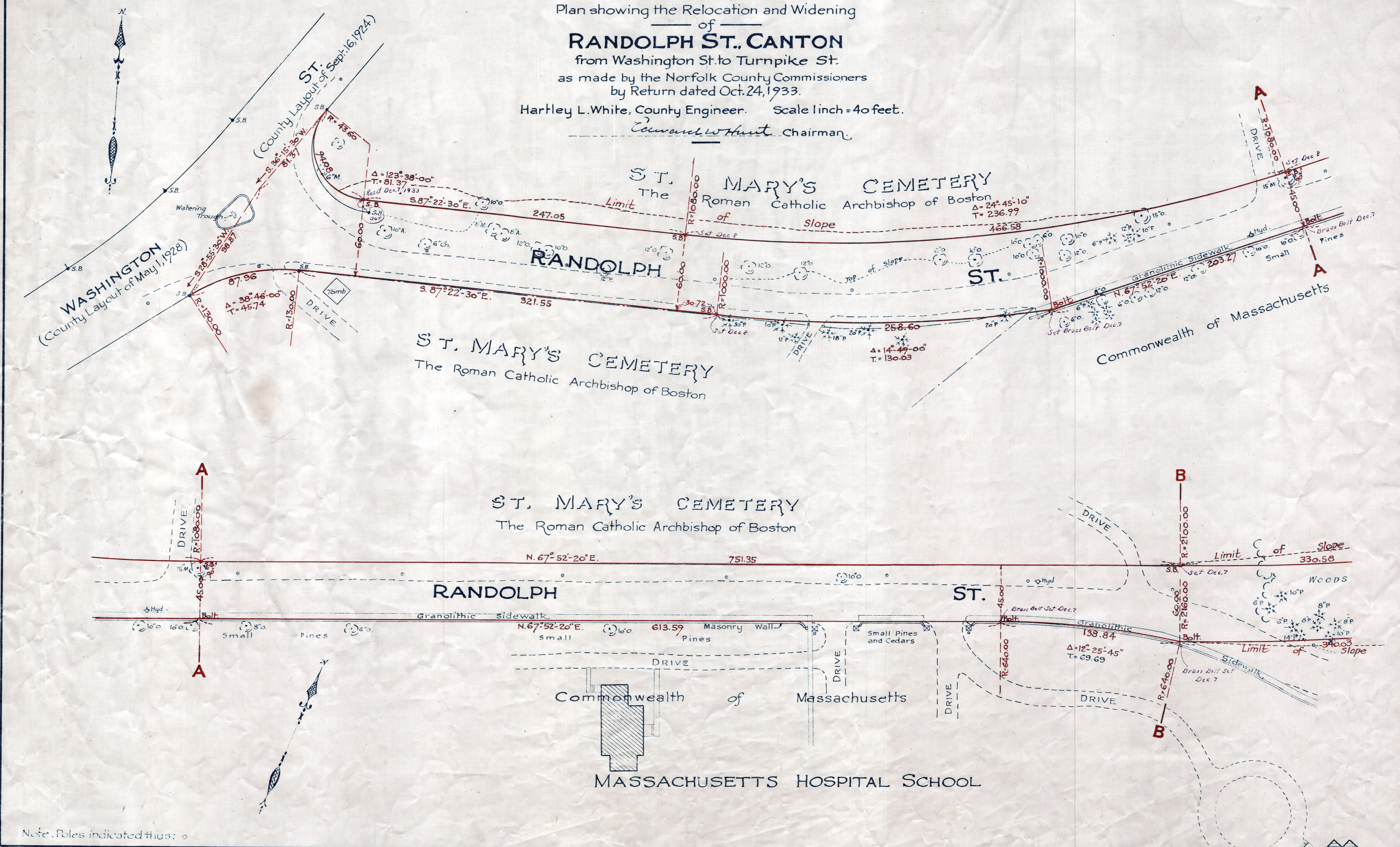
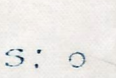


Plan showing the Relocation and Widening
 of
RANDOLPH ST., CANTON
 from Washington St. to Turnpike St.
 as made by the Norfolk County Commissioners
 by Return dated Oct. 24, 1933.
 Hartley L. White, County Engineer. Scale 1 inch = 40 feet.
Edward W. Hunt Chairman.



Note: Poles indicated thus: 

Date of Entry Dec. 2, 1933.

P.B. # 117-458-60
TAKING-2007-593