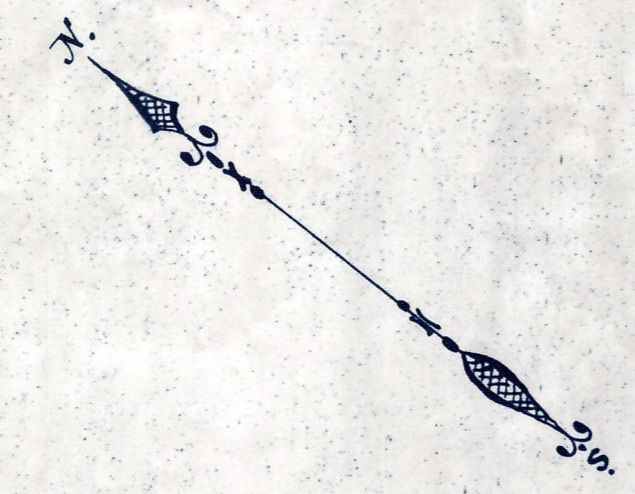
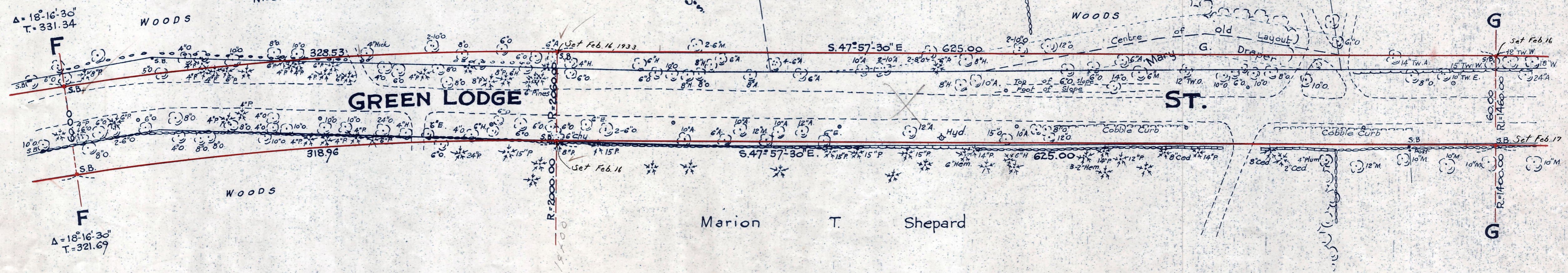


Charles Almy et al, Trustees  
Mrs. Susan S. Cabot, Life Tenancy

Marion T. Shepard

Mary G. Draper

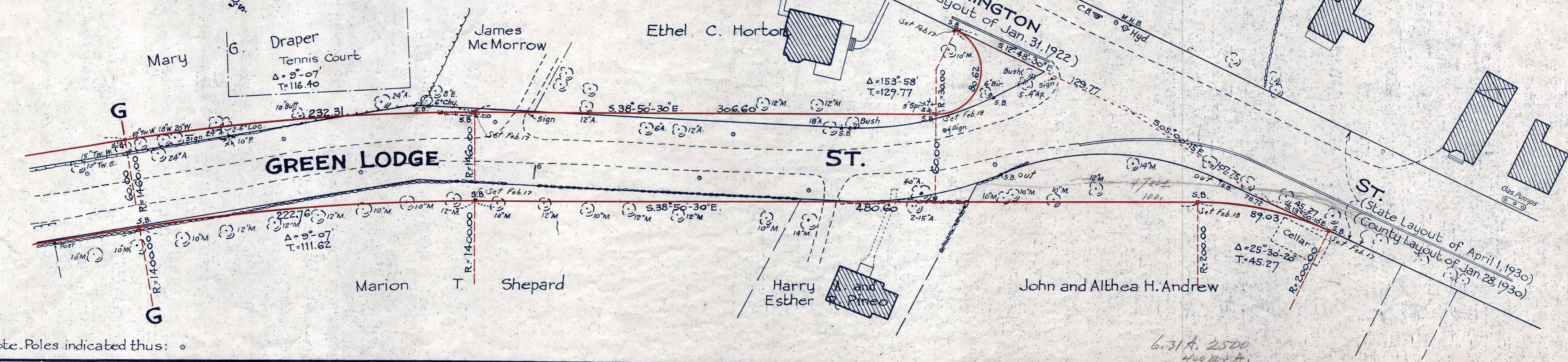


Mary G. Draper  
Tennis Court  
 $\Delta = 9^{\circ}-07'$   
T=116.40

James  
Mc Morrow

Ethel C. Horton

WASHINGTON  
(State Layout of Jan. 31, 1922)



GREEN LODGE ST.

WASHINGTON ST.

ST.

Marion T. Shepard

Harry Esther  
and  
Pinedo

John and Althea H. Andrew

(State Layout of April 1, 1930)  
(County Layout of Jan 28, 1930)

Note: Poles indicated thus:  $\odot$

6.31A 2500  
400 P.M.A.