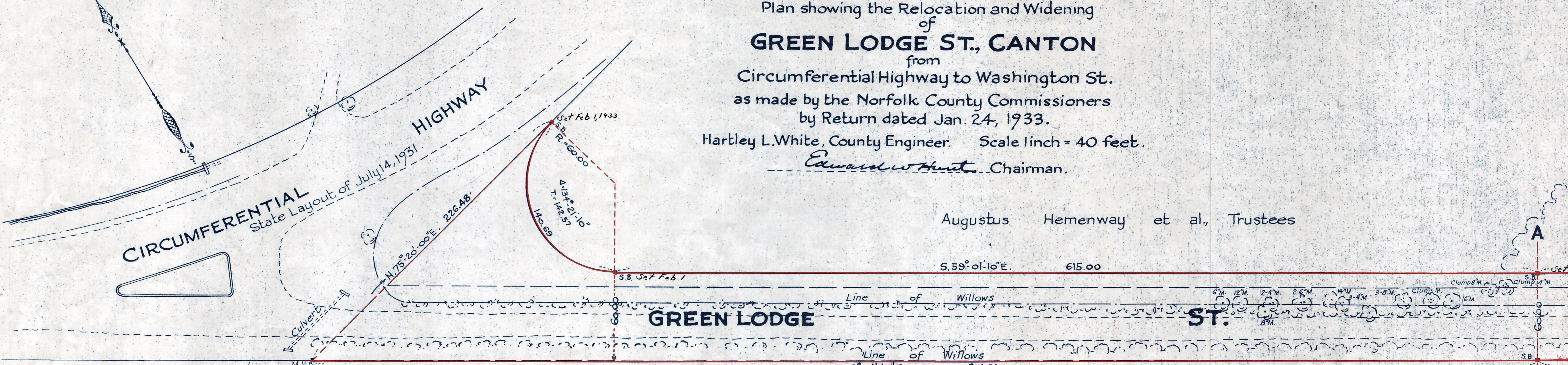


Plan showing the Relocation and Widening  
of  
**GREEN LODGE ST., CANTON**  
from  
Circumferential Highway to Washington St.  
as made by the Norfolk County Commissioners  
by Return dated Jan. 24, 1933.  
Hartley L. White, County Engineer. Scale 1 inch = 40 feet.  
Edward W. Hunt, Chairman.

Augustus Hemenway et al., Trustees

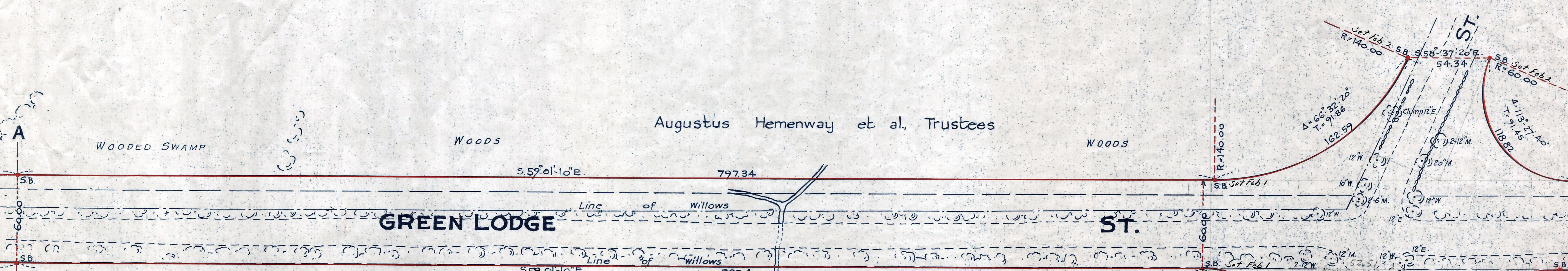
Robert L. Draper



Comm. of Mass.  
Metropolitan Dist. Commission.

WOODED SWAMP

WOODED SWAMP



Augustus Hemenway et al., Trustees

Robert L. Draper

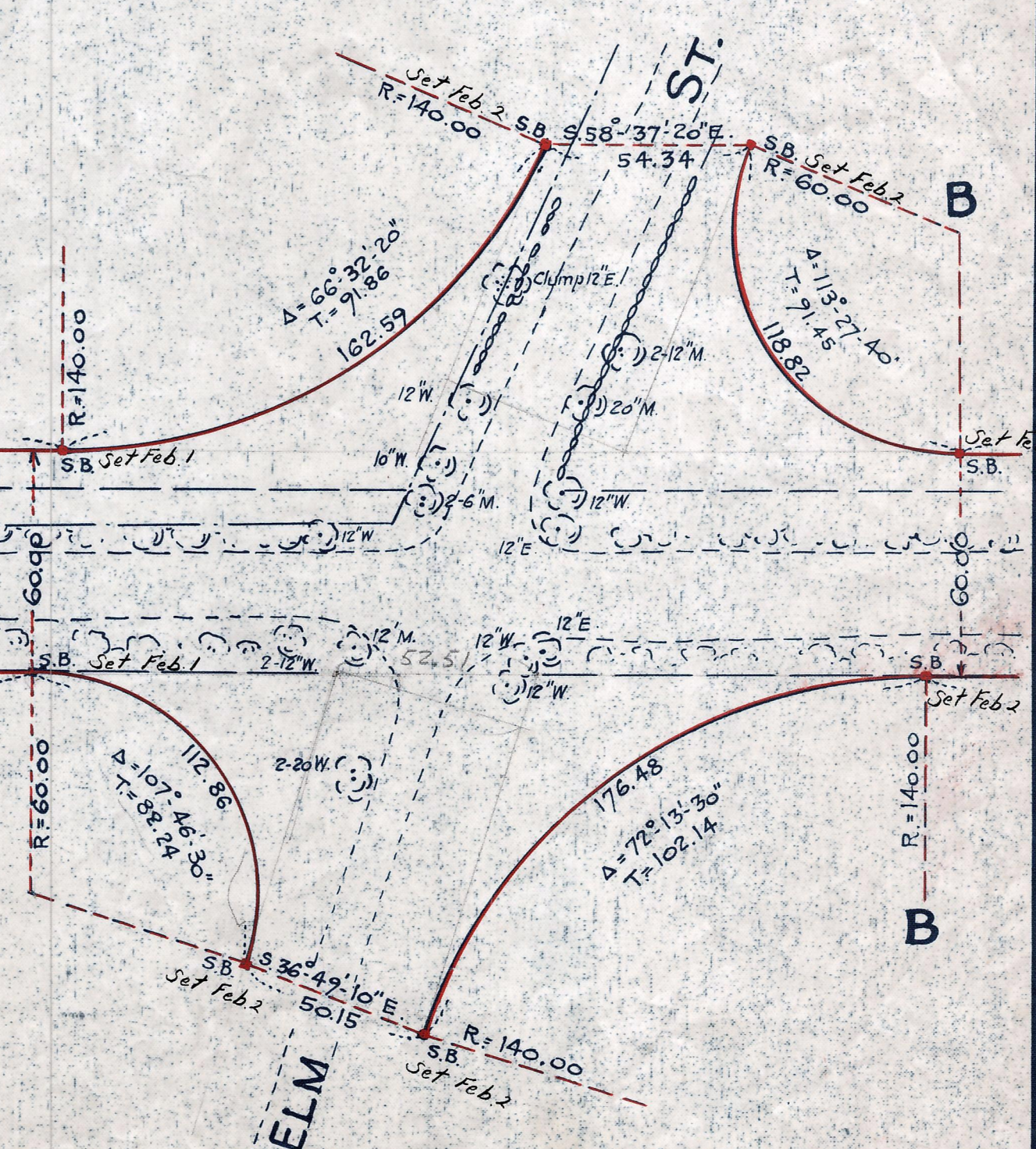
WOODED SWAMP

WOODS

WOODS

WOODED SWAMP

WOODS



Note. Poles indicated thus: o

Date of Entry March 3, 1933.

P.B. 116-63-66  
TAKING-1783-436  
Rec. 2-3-33