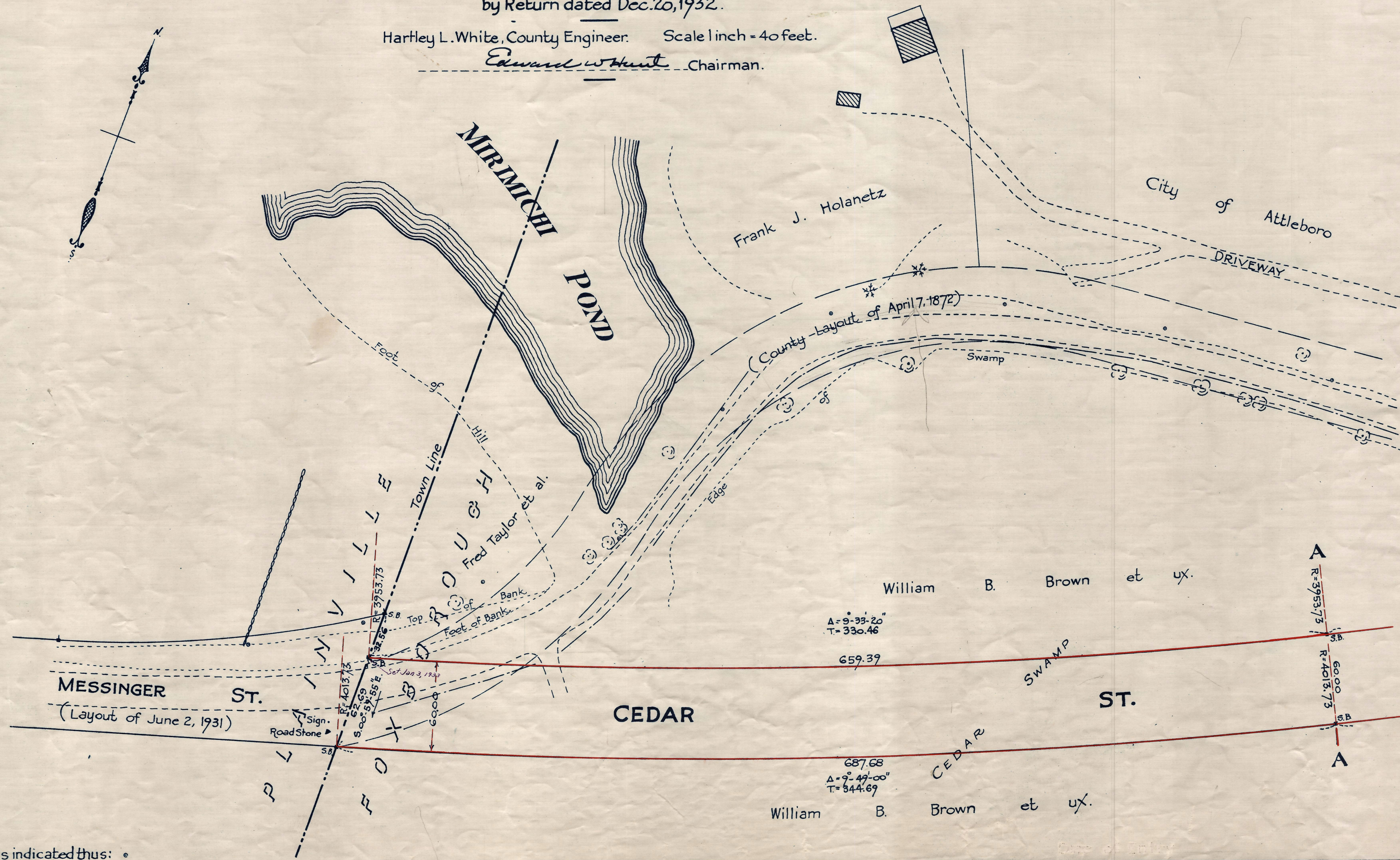
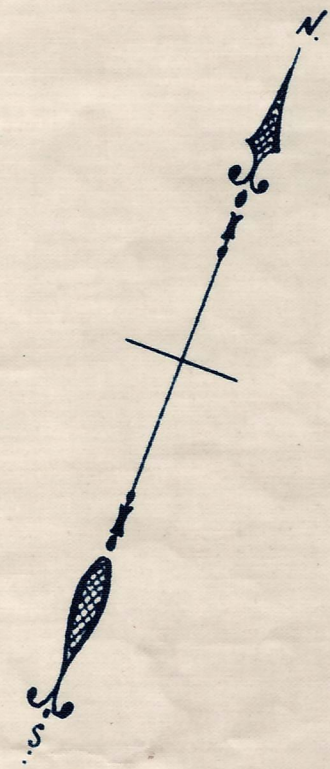


Plan showing the Relocation and Widening  
of  
**CEDAR ST., FOXBOROUGH**  
from the Plainville Town Line to South St.  
as made by the Norfolk County Commissioners  
by Return dated Dec. 20, 1932.

Hartley L. White, County Engineer. Scale 1 inch = 40 feet.

*Edward W. Hunt* Chairman.



Note: Poles indicated thus: •

Date of Entry Jan 13 1933.

P.B. 116-68  
TAKING - 1981-422  
Rec. 1-7-33