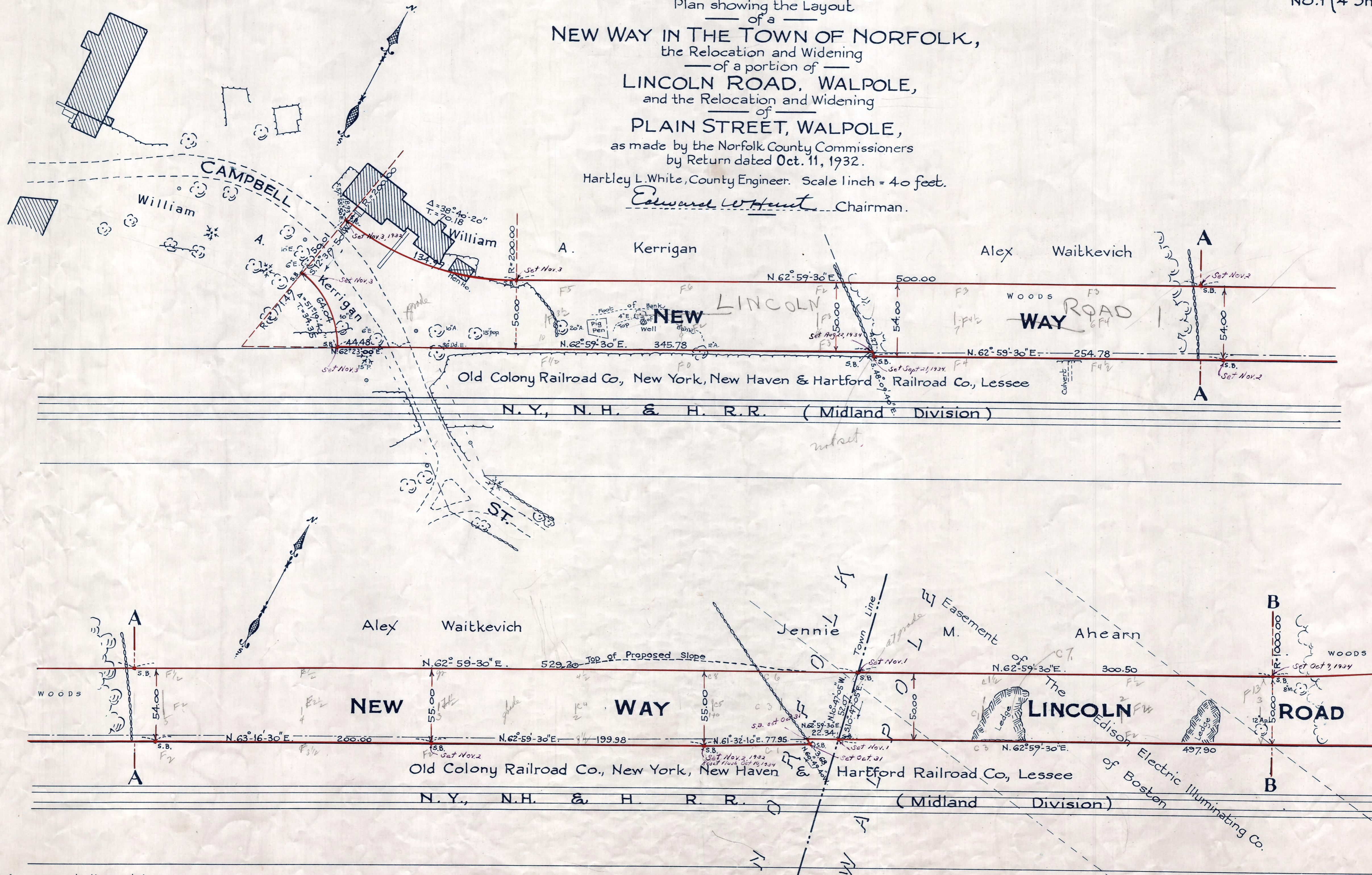


Plan showing the Layout
of a
NEW WAY IN THE TOWN OF NORFOLK,
the Relocation and Widening
of a portion of
LINCOLN ROAD, WALPOLE,
and the Relocation and Widening
of
PLAIN STREET, WALPOLE,
as made by the Norfolk County Commissioners
by Return dated Oct. 11, 1932.

Hartley L. White, County Engineer. Scale 1 inch = 40 feet.

Edward W. Hunt Chairman.



Note. Poles indicated thus: o

Date of Entry Oct. 31, 1932