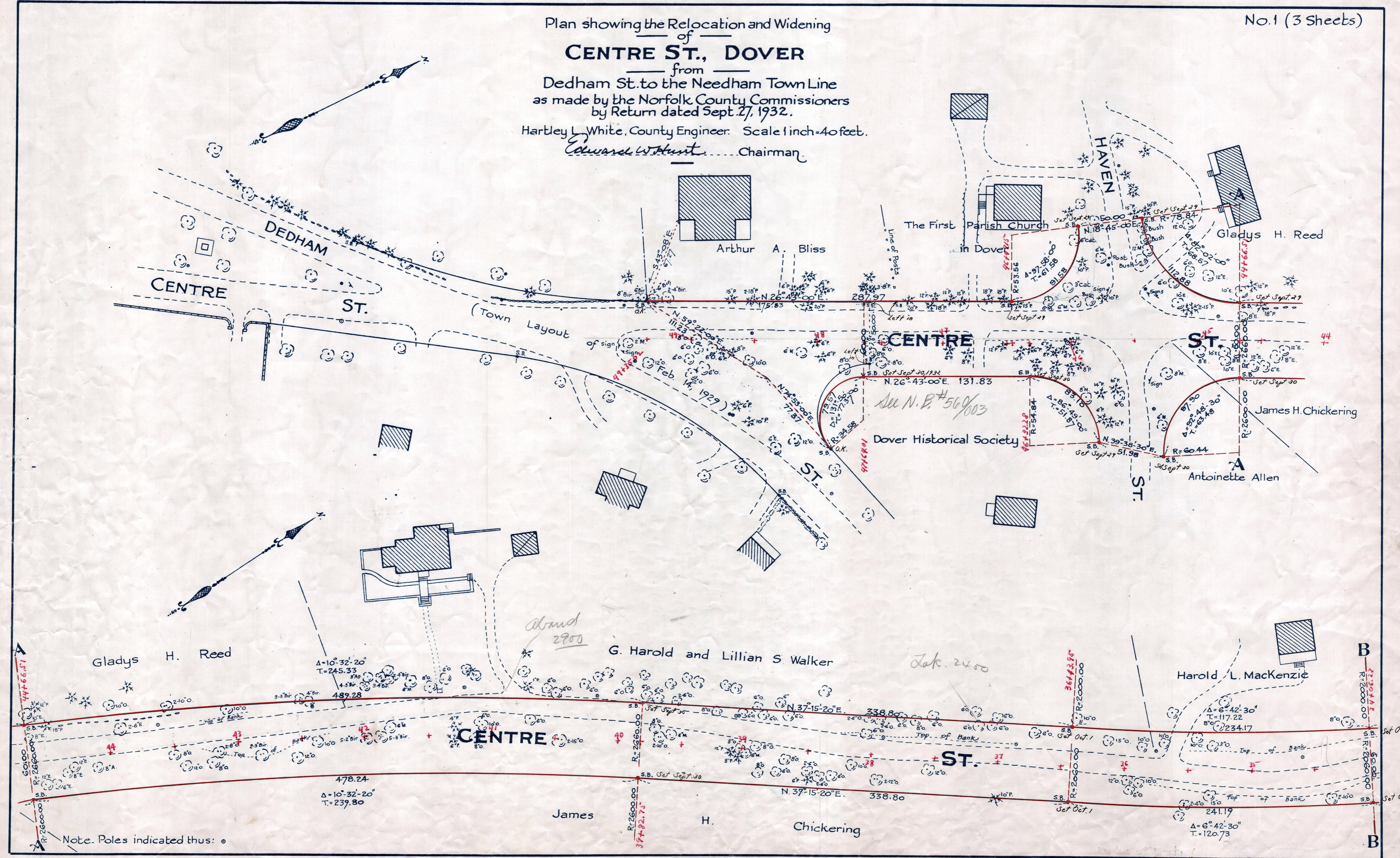


Plan showing the Relocation and Widening of CENTRE ST., DOVER

from Dedham St. to the Needham Town Line as made by the Norfolk County Commissioners by Return dated Sept. 27, 1932.

Hartley L. White, County Engineer. Scale 1 inch = 40 feet.

Edward W. Hunt Chairman



Note. Poles indicated thus: ○

Date of Entry Oct. 30, 1933. 189

P.B. 115-464-66
TAKING - 1972-375
Rec. 10-16-32