

Plan showing the Relocation and Widening
of

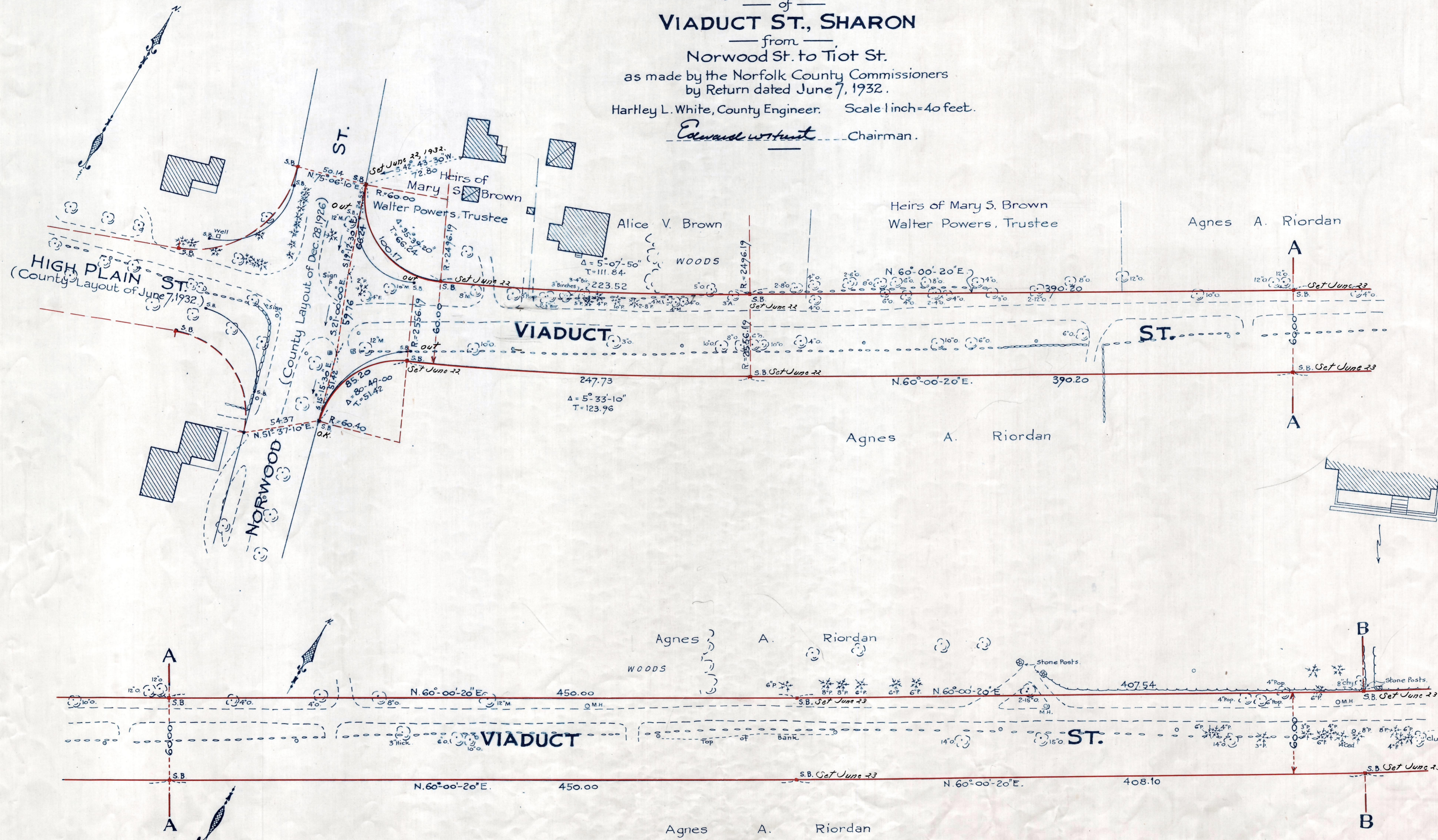
VIADUCT ST., SHARON

from
Norwood St. to Tiot St.

as made by the Norfolk County Commissioners
by Return dated June 7, 1932.

Hartley L. White, County Engineer. Scale 1 inch = 40 feet.

Edward W. Hunt Chairman.



Note: Poles indicated thus: ○

Date of Entry Nov. 25, 1932

185
P.B. 115-290-91
TAKING - 1964-168
Rec. 6-18-32