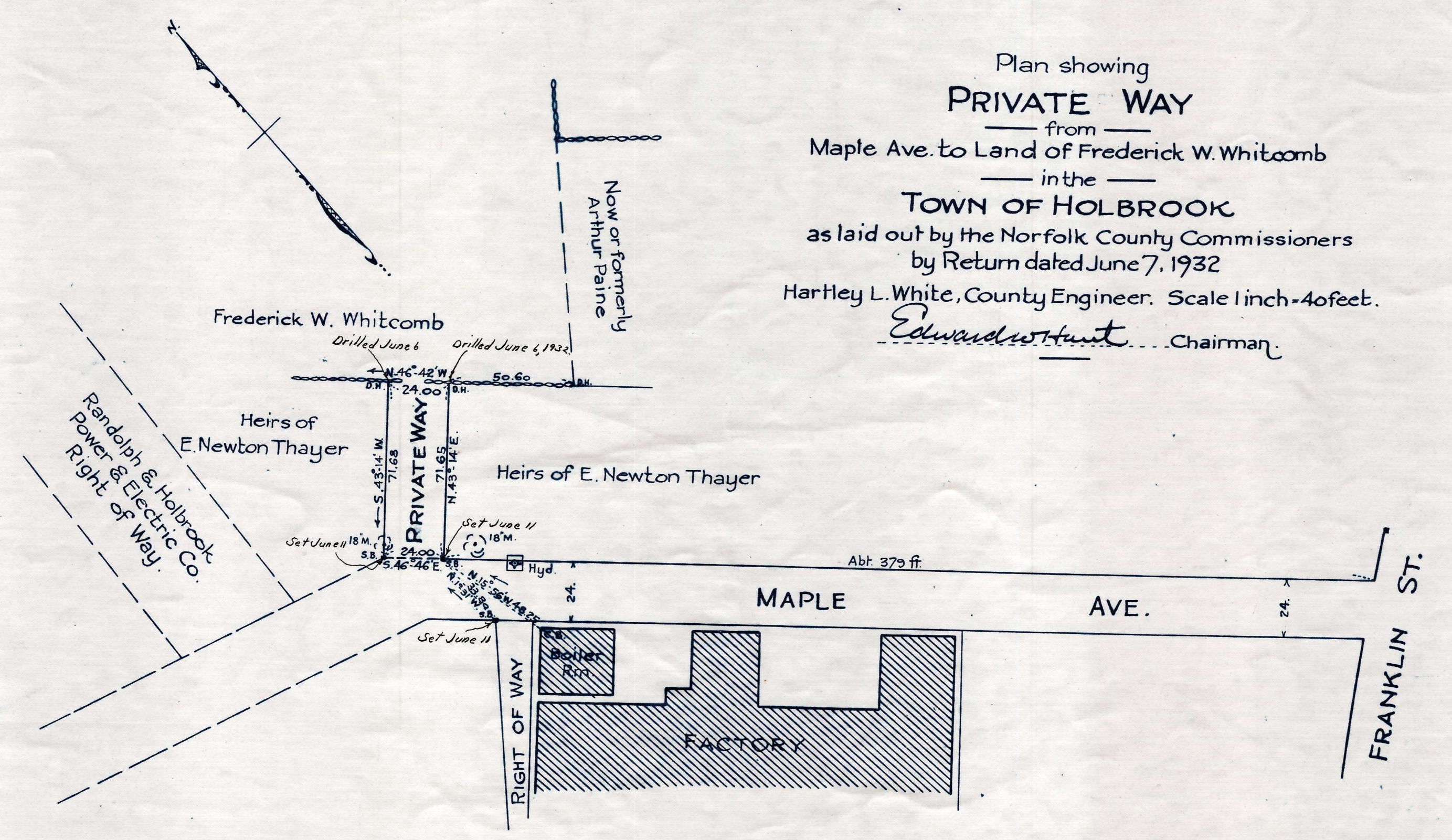


Plan showing
PRIVATE WAY
 from ———
 Maple Ave. to Land of Frederick W. Whitcomb
 in the ———
TOWN OF HOLBROOK
 as laid out by the Norfolk County Commissioners
 by Return dated June 7, 1932
 Hartley L. White, County Engineer. Scale 1 inch = 40 feet.
Edward Hunt Chairman.



185-A