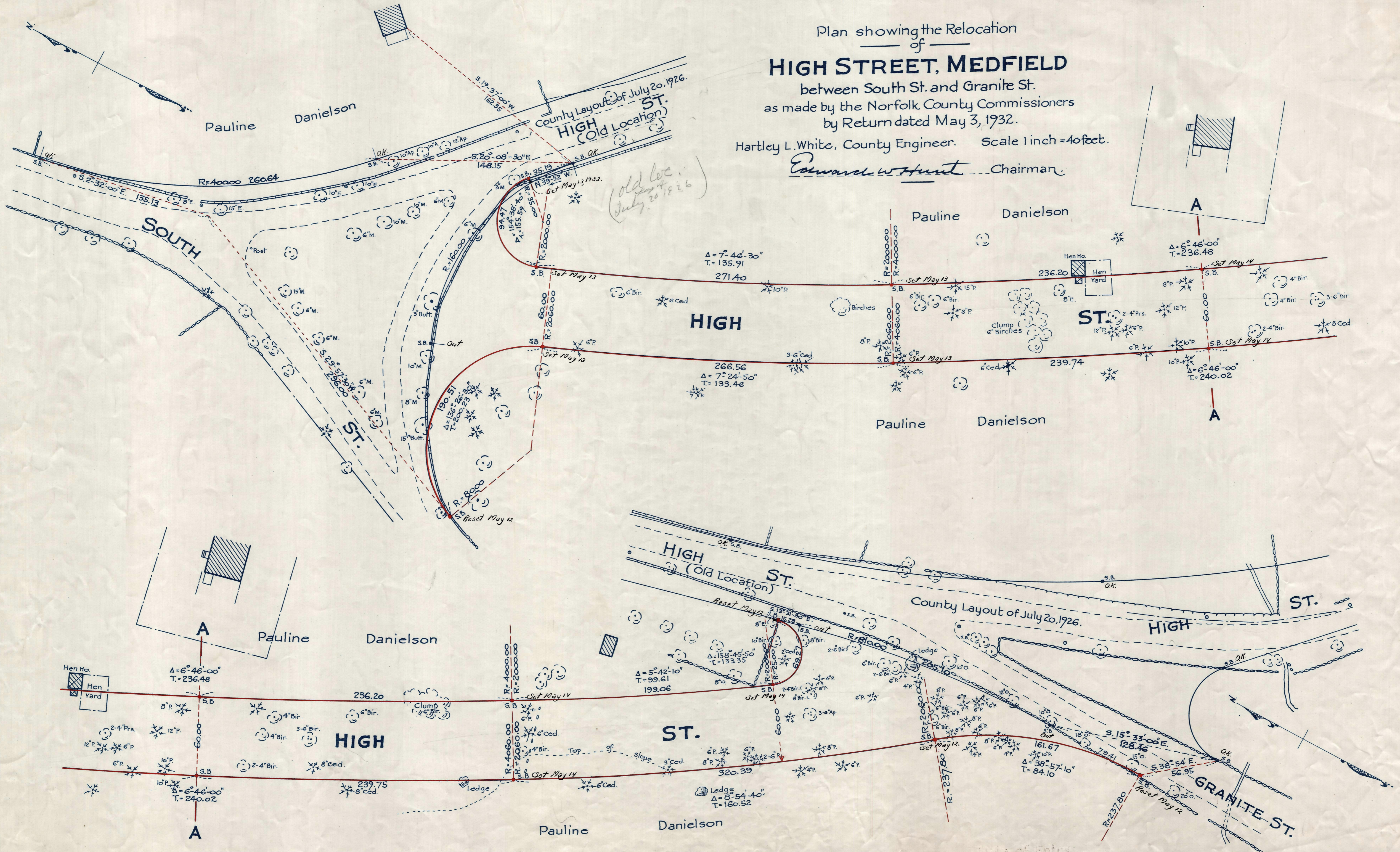


Plan showing the Relocation
of
HIGH STREET, MEDFIELD

between South St. and Granite St.
as made by the Norfolk County Commissioners
by Return dated May 3, 1932.

Hartley L. White, County Engineer. Scale 1 inch = 40 feet.

Edward W. Hunt Chairman.



Note - Poles indicated thus: ○

Date of Entry Apr. 20, 1933.

P.B. 115-221
TAKING - 1961-146
REL. 5-11-32