

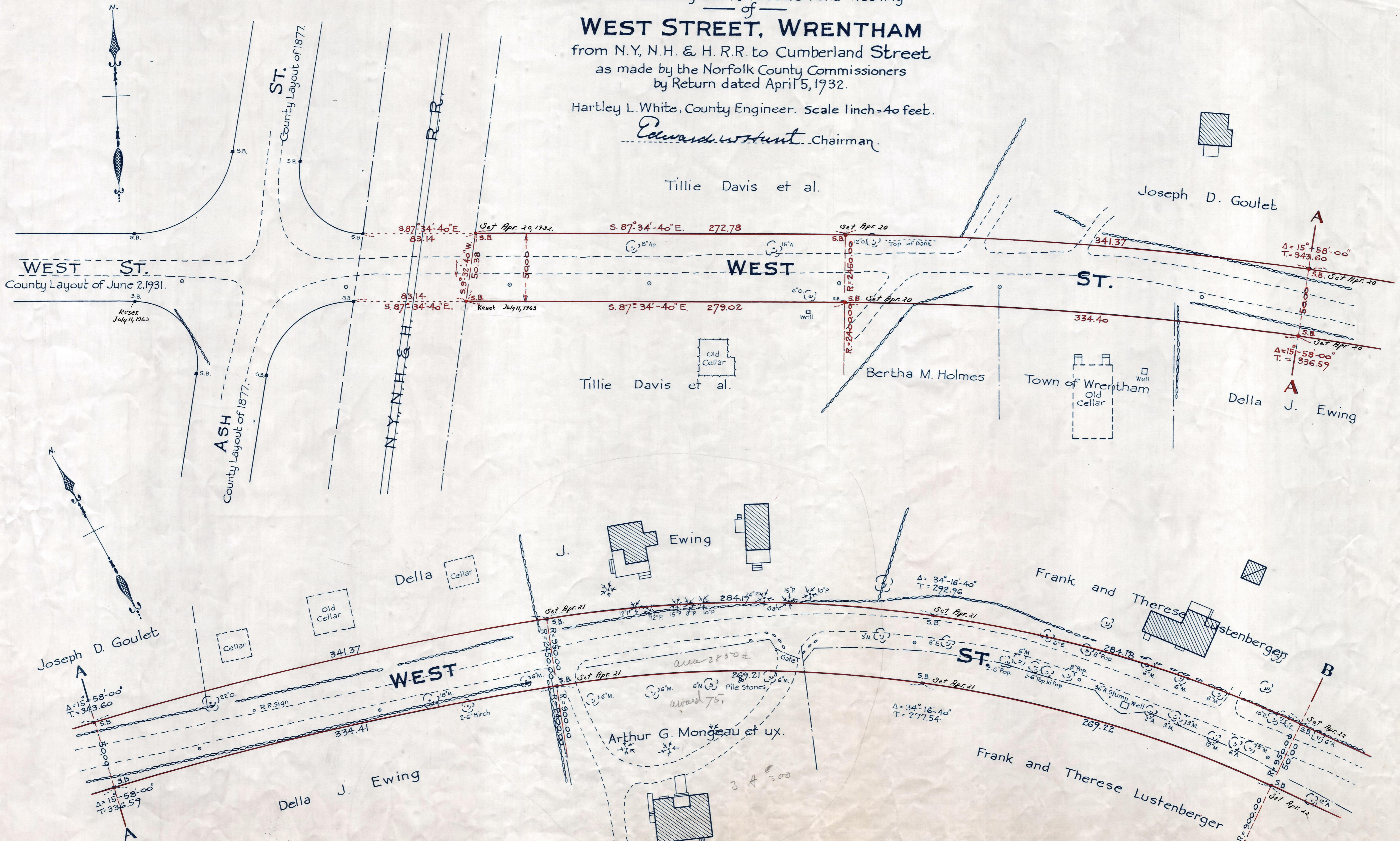
Plan showing the Relocation and Widening  
of  
**WEST STREET, WRENTHAM**  
from N.Y. N.H. & H. R.R. to Cumberland Street  
as made by the Norfolk County Commissioners  
by Return dated April 5, 1932.

Hartley L. White, County Engineer. Scale 1 inch = 40 feet.

*Edward W. Hunt* Chairman

Tillie Davis et al.

Joseph D. Goulet



Note - Poles indicated thus: o

Date of Entry Nov. 14, 1932.

*Entry 11/14/1932*

P.B. 115-146-48  
TAKING - 1959-403  
Return 1959/Rec 4-21-32  
403