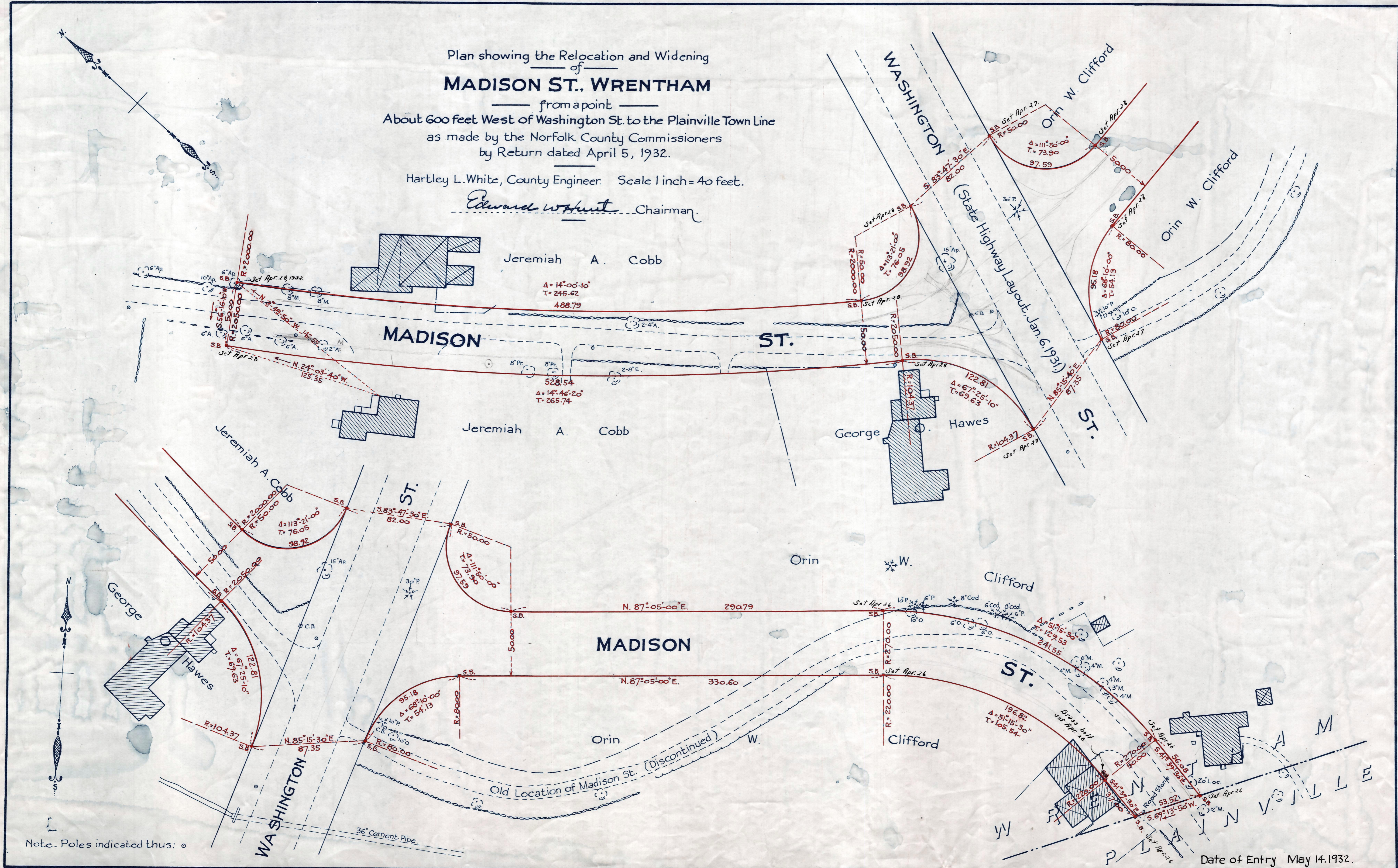


Plan showing the Relocation and Widening
of
MADISON ST., WRENTHAM

from a point
About 600 feet West of Washington St. to the Plainville Town Line
as made by the Norfolk County Commissioners
by Return dated April 5, 1932.

Hartley L. White, County Engineer. Scale 1 inch = 40 feet.

Edward W. Hunt Chairman



Note. Poles indicated thus: ○

Date of Entry May 14, 1932.