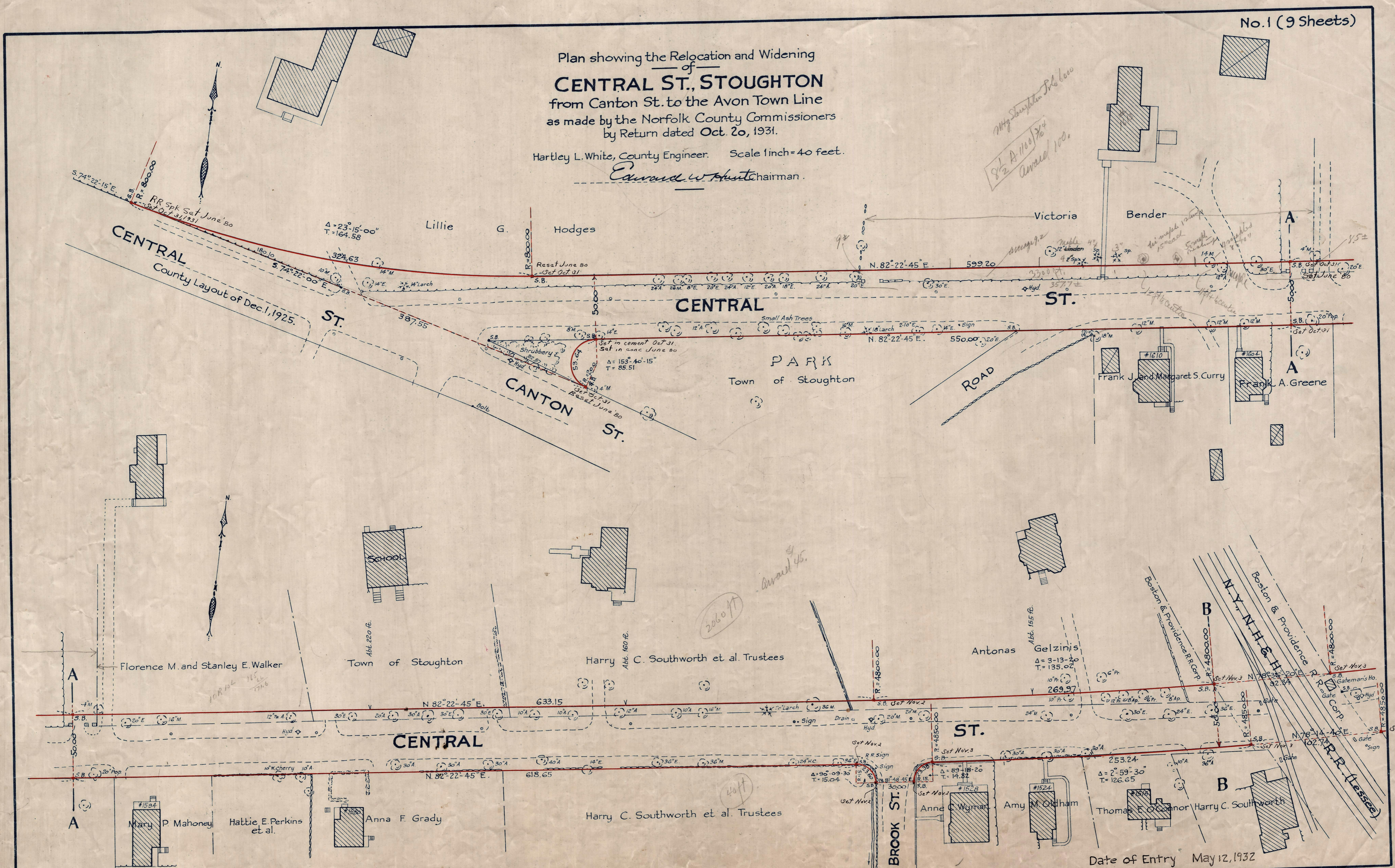


Plan showing the Relocation and Widening of **CENTRAL ST., STOUGHTON** from Canton St. to the Avon Town Line as made by the Norfolk County Commissioners by Return dated Oct. 20, 1931.

Hartley L. White, County Engineer. Scale 1 inch = 40 feet.

Edward W. White Chairman.

My Stoughton Rd. loc. 8 1/2 A 1100 3/4 Annex 100.



Note: Poles indicated thus: ◦

Date of Entry May 12, 1932

P.B. 115-793-801
TAKING-1947-89
Rec. 11-3-31