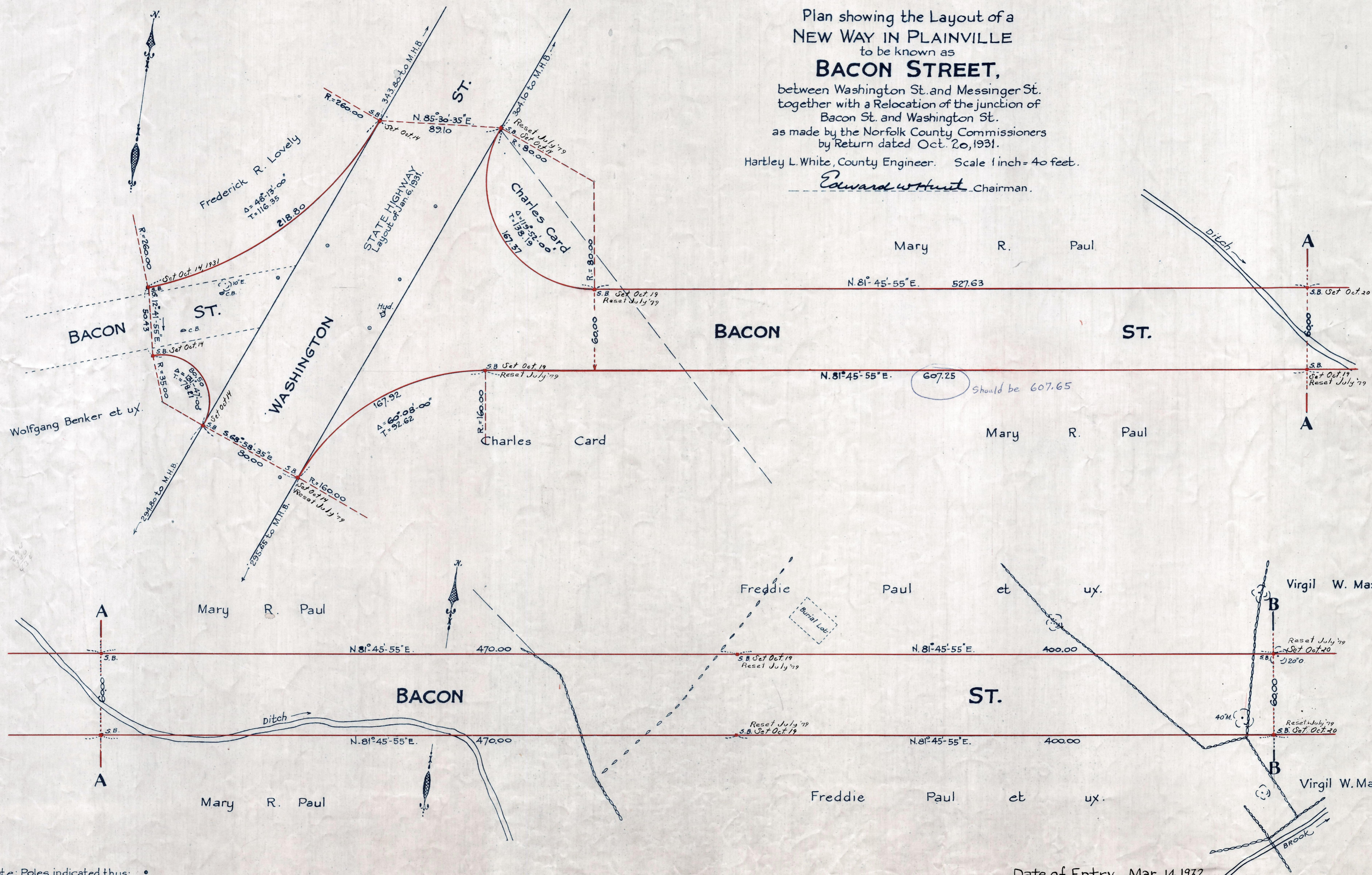


Plan showing the Layout of a  
NEW WAY IN PLAINVILLE  
to be known as  
**BACON STREET,**

between Washington St. and Messinger St.  
together with a Relocation of the junction of  
Bacon St. and Washington St.  
as made by the Norfolk County Commissioners  
by Return dated Oct. 20, 1931.

Hartley L. White, County Engineer. Scale 1 inch = 40 feet.

*Edward W. Hunt* Chairman.



607.25 Should be 607.65

Note: Poles indicated thus: •

Date of Entry Mar. 14, 1932

P.B. 114-772-73  
TAKING 1945-564  
REG. 10-23-31