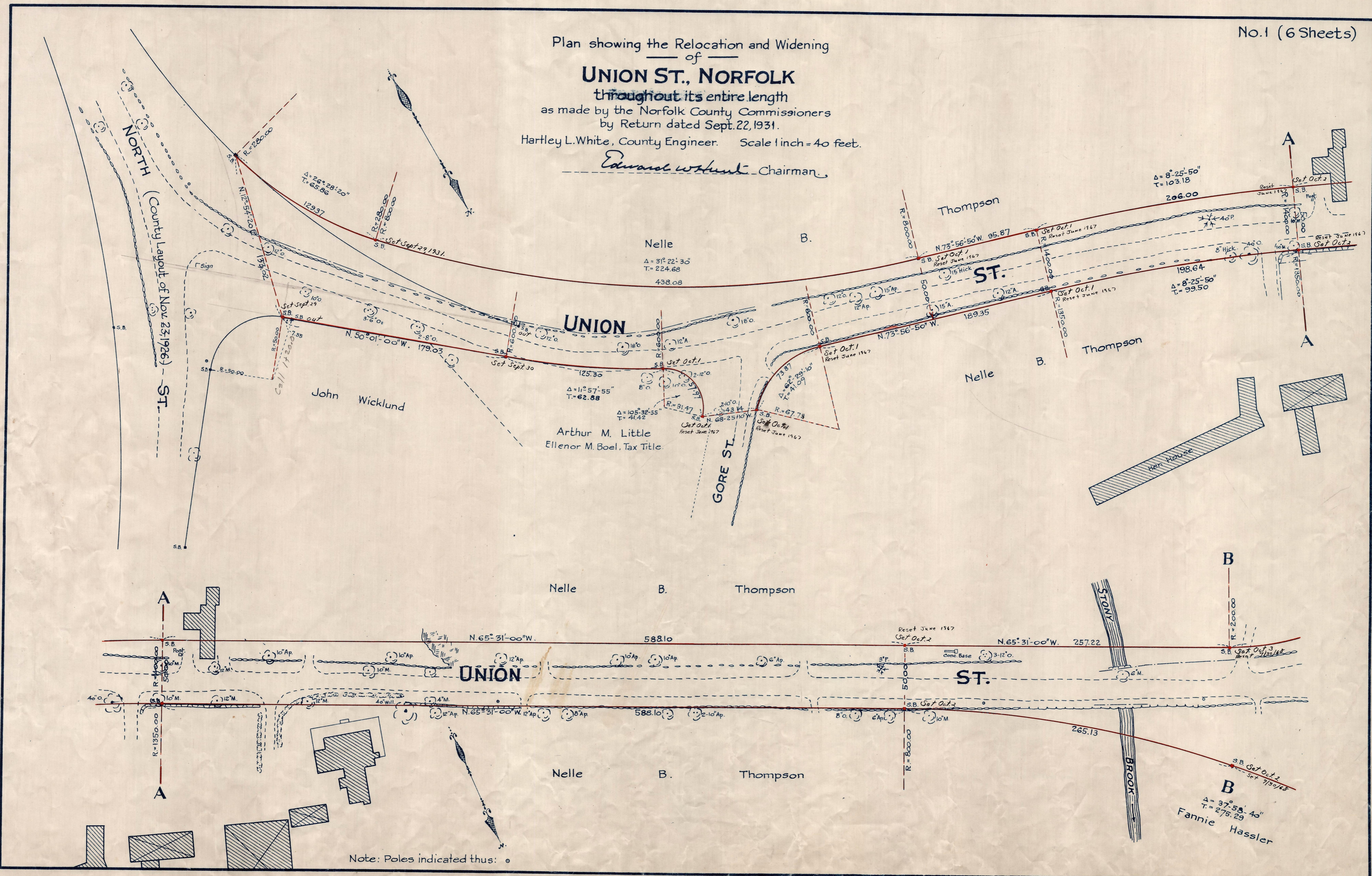


Plan showing the Relocation and Widening  
 of  
**UNION ST., NORFOLK**  
 throughout its entire length  
 as made by the Norfolk County Commissioners  
 by Return dated Sept. 22, 1931.  
 Hartley L. White, County Engineer. Scale 1 inch = 40 feet.  
*Edward W. Hunt* Chairman



Note: Poles indicated thus: ○

Date of Entry Jan 25, 1933.

P.B. 114-737-42  
 TAKING-1944-41  
 Rec. 10-2-31