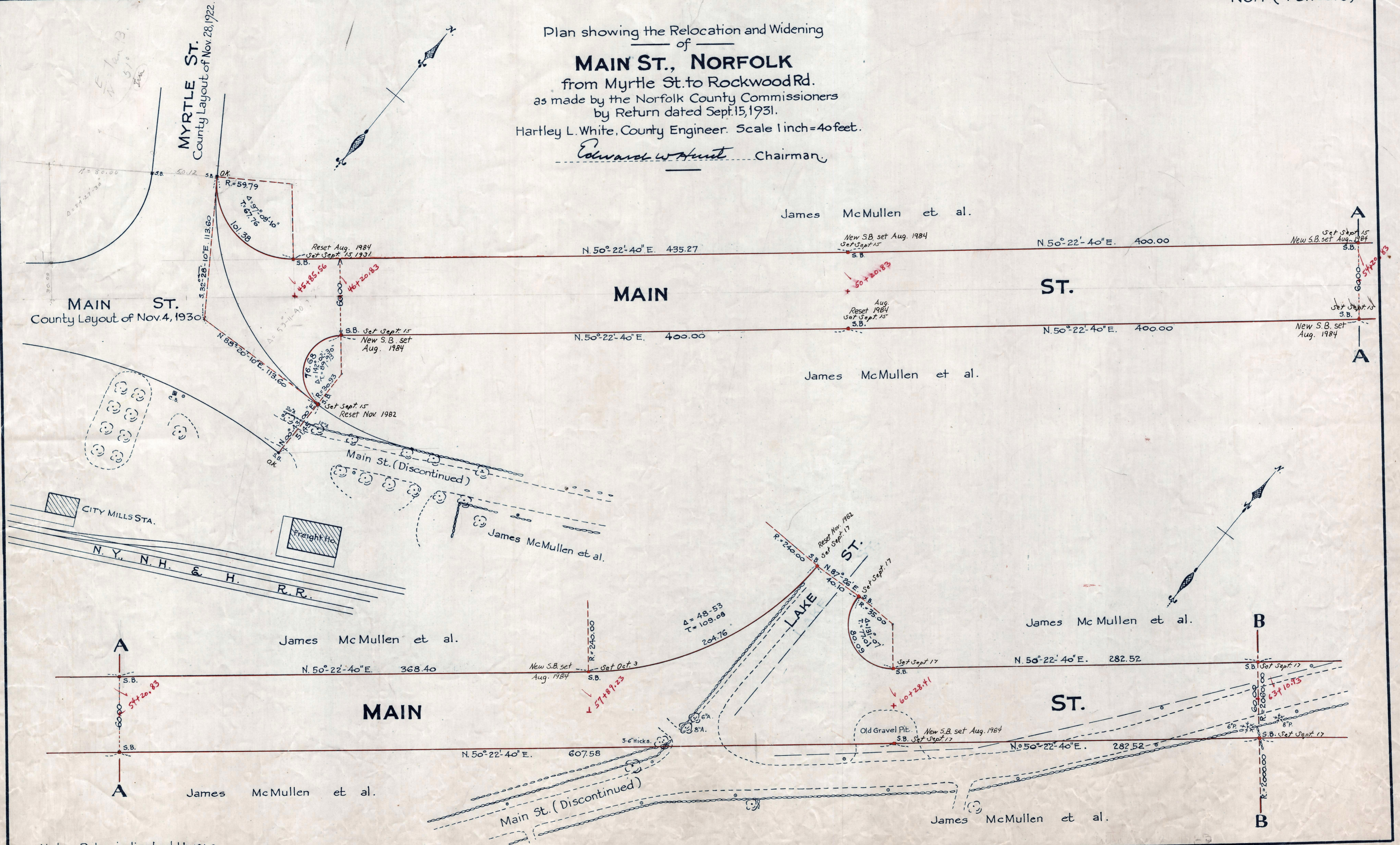


Plan showing the Relocation and Widening
 of
MAIN ST., NORFOLK
 from Myrtle St. to Rockwood Rd.
 as made by the Norfolk County Commissioners
 by Return dated Sept. 15, 1931.
 Hartley L. White, County Engineer. Scale 1 inch = 40 feet.
Edward W. Hunt Chairman



Note: Poles indicated thus: °

Date of Entry Jan. 25, 1933.
 P.B. 114-706-09
 TAKING - 1941-341
 Rec. 9-23-31