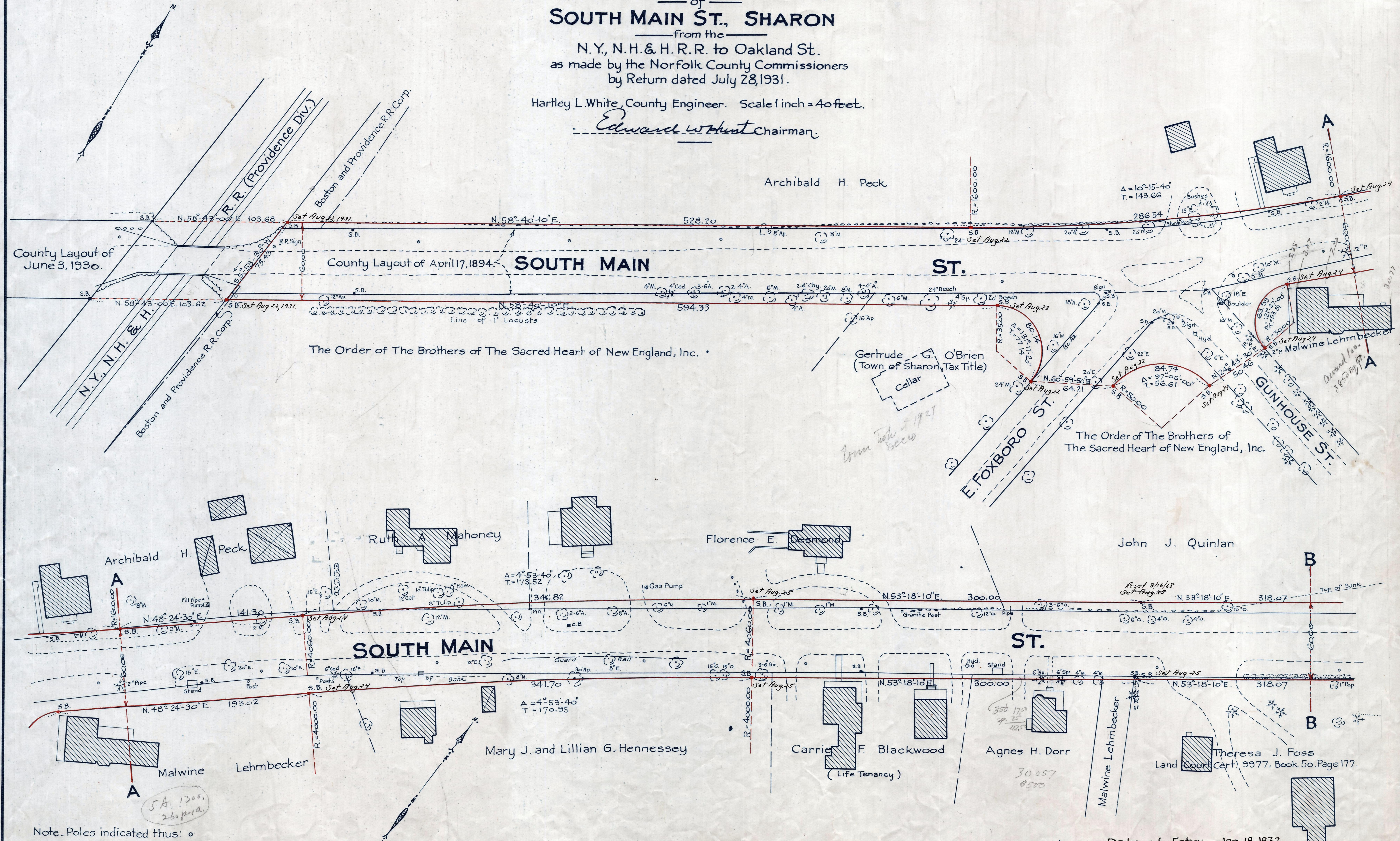


Plan showing the Relocation and Widening of **SOUTH MAIN ST., SHARON** from the

N.Y., N.H. & H.R.R. to Oakland St.
as made by the Norfolk County Commissioners
by Return dated July 28, 1931.

Hartley L. White, County Engineer. Scale 1 inch = 40 feet.

Edward W. Hunt Chairman.



Note. Poles indicated thus: ○

Date of Entry Jan 18, 1932

P.B. 114-578-579
TAKING - 1936-384
Rec. 8-3-31