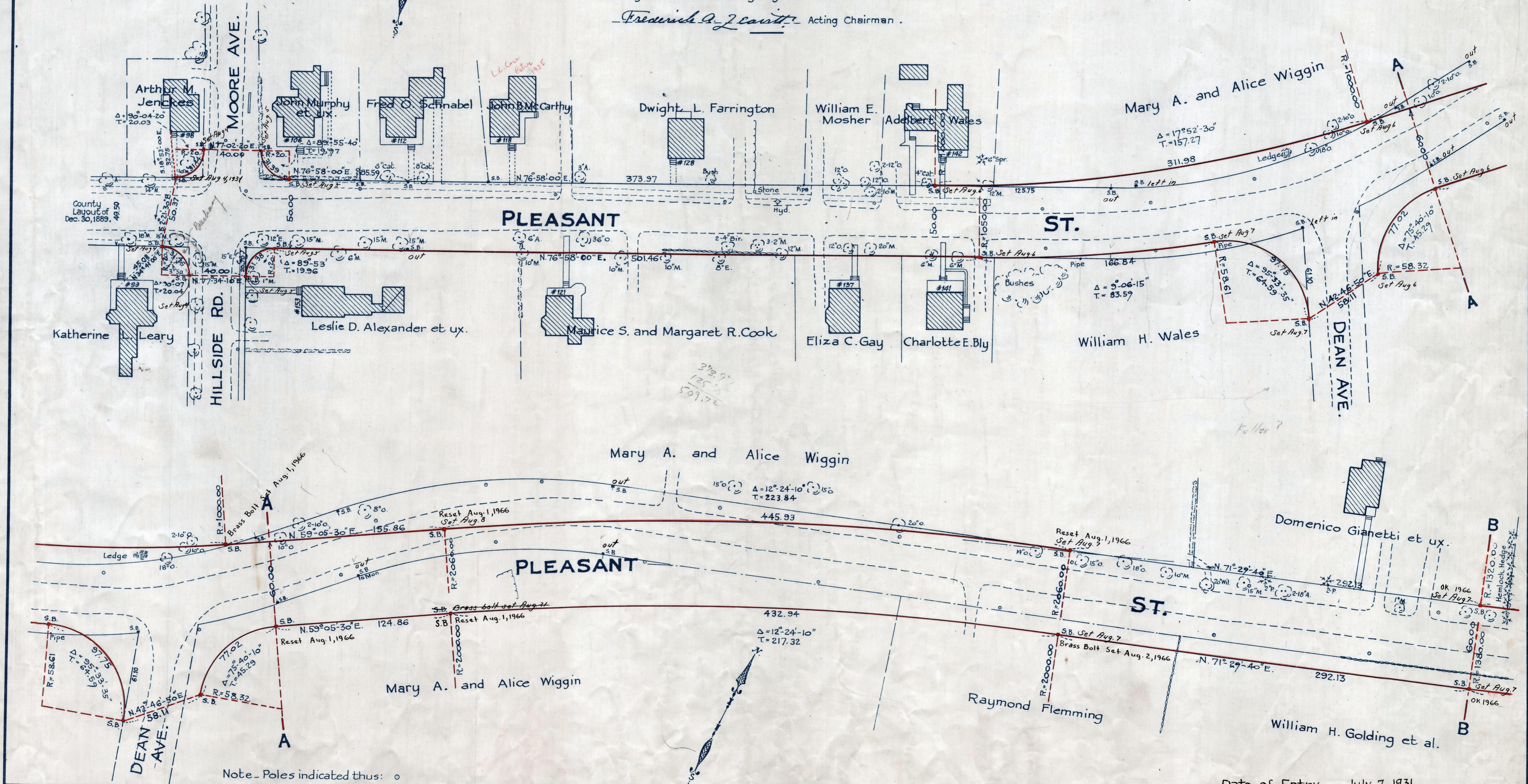


Plan showing the Relocation and Widening of PLEASANT ST., FRANKLIN,

from Moore Ave. to the Norfolk Town Line as made by the Norfolk County Commissioners by Return dated June 30, 1931.

Hartley L. White, County Engineer. Scale 1 inch = 40 feet.

Frederick A. Leavitt, Acting Chairman.



Note - Poles indicated thus: o

Date of Entry July 7, 1931

R.B. 114-494-78
TAKING - 1934-202
Rec. 7-11-31