

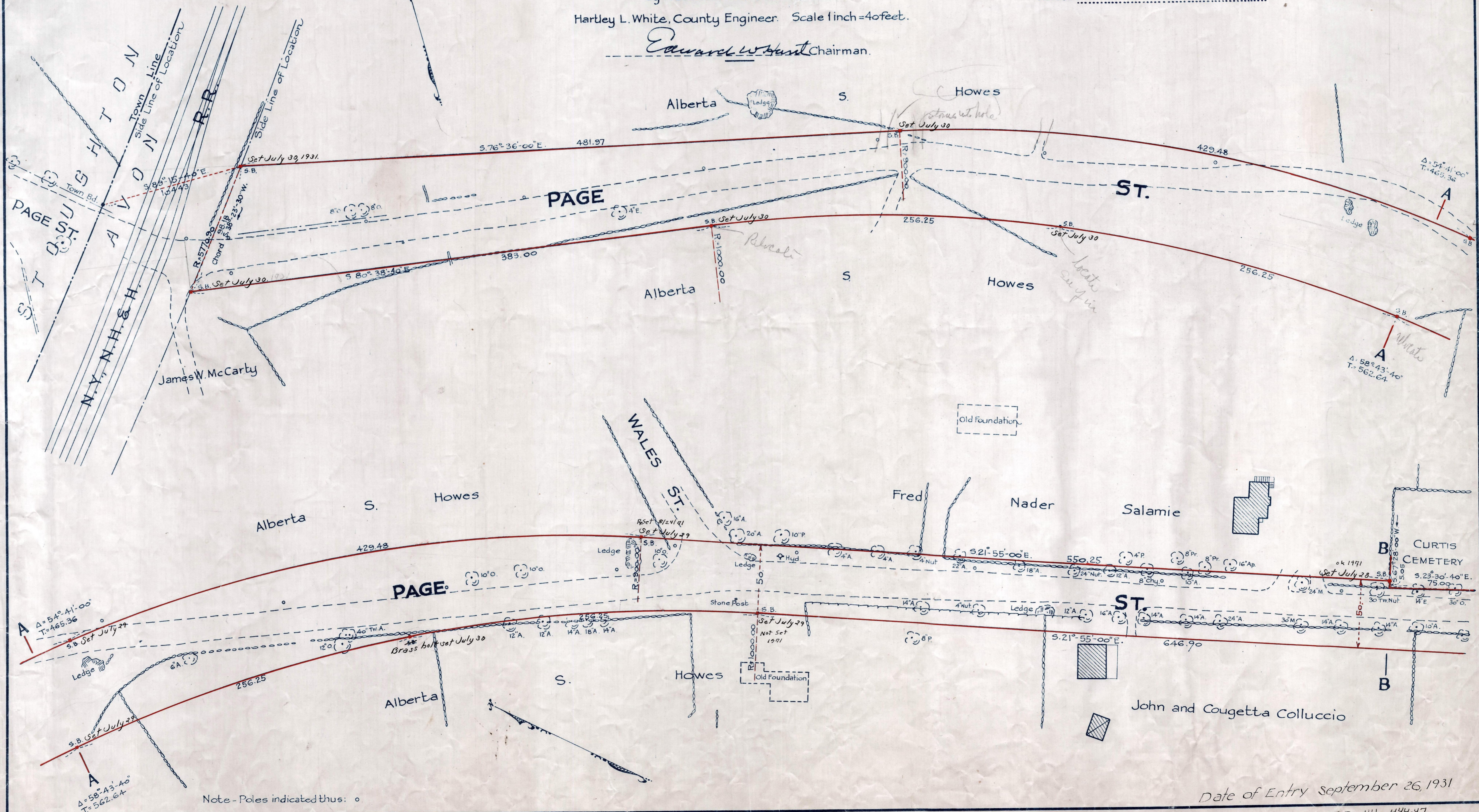
Plan showing the Relocation and Widening of **PAGE STREET, AVON,** from the Stoughton Town Line to Pond St. as made by the Norfolk County Commissioners by Return dated June 9, 1931.

Hartley L. White, County Engineer. Scale 1 inch = 40 feet.

*Edward W. Hunt* Chairman.

- A TRUE COPY -

Attest : ..... Clerk.



Note - Poles indicated thus: ○

Date of Entry September 26, 1931

P.B. 114-444-47  
TAKING 1932-361  
Rec. June 24, 1931