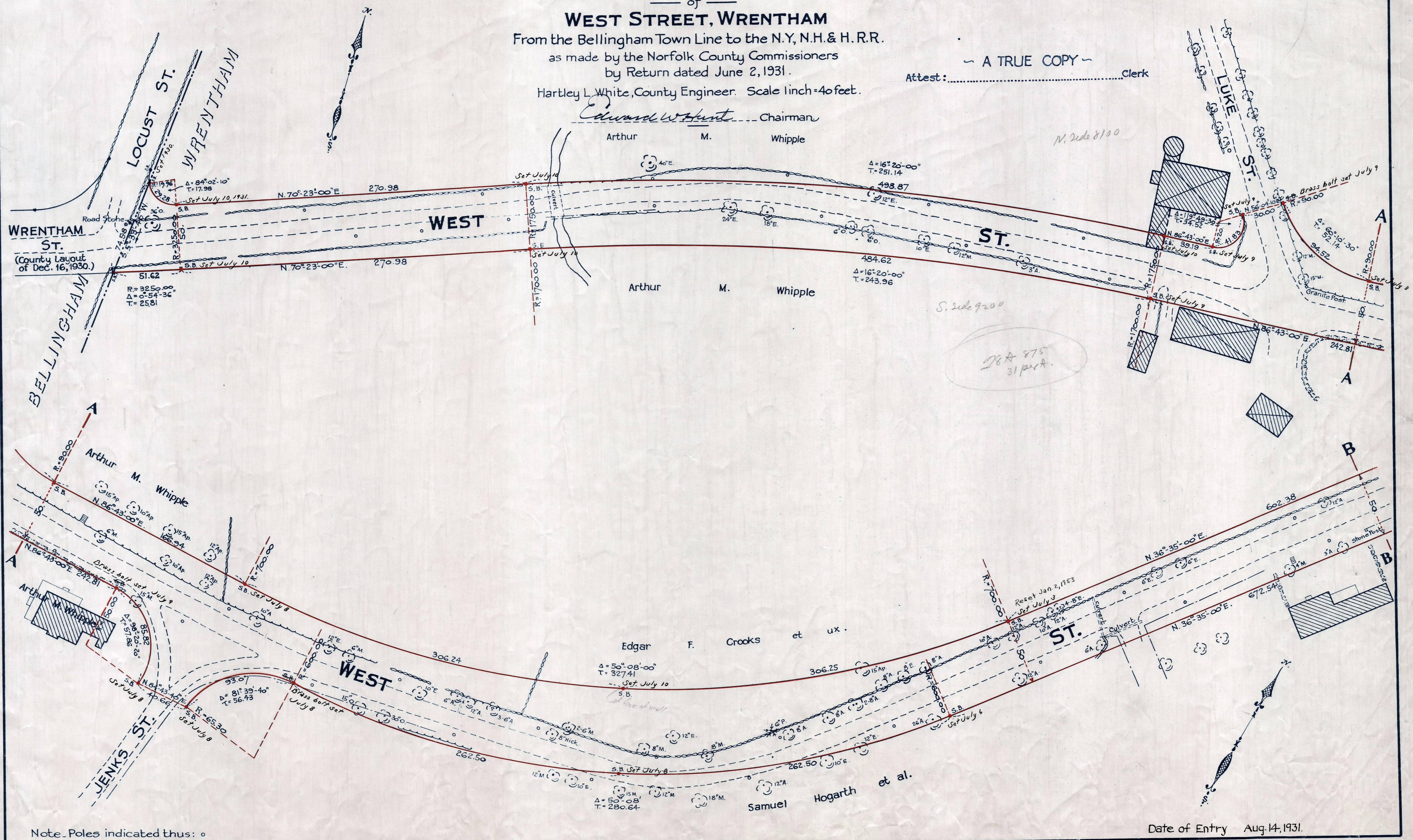


Plan showing the Relocation and Widening of **WEST STREET, WRENTHAM**
From the Bellingham Town Line to the N.Y. N.H. & H. R.R.

as made by the Norfolk County Commissioners
by Return dated June 2, 1931.
Hartley L. White, County Engineer. Scale 1 inch = 40 feet.

- A TRUE COPY -
Attest: Clerk

Edward W. Hunt Chairman
Arthur M. Whipple



Note. Poles indicated thus: ○

Date of Entry Aug. 14, 1931.

P.B. 113-420-24
TAKING - 1931-342
Rec. 6-13-31