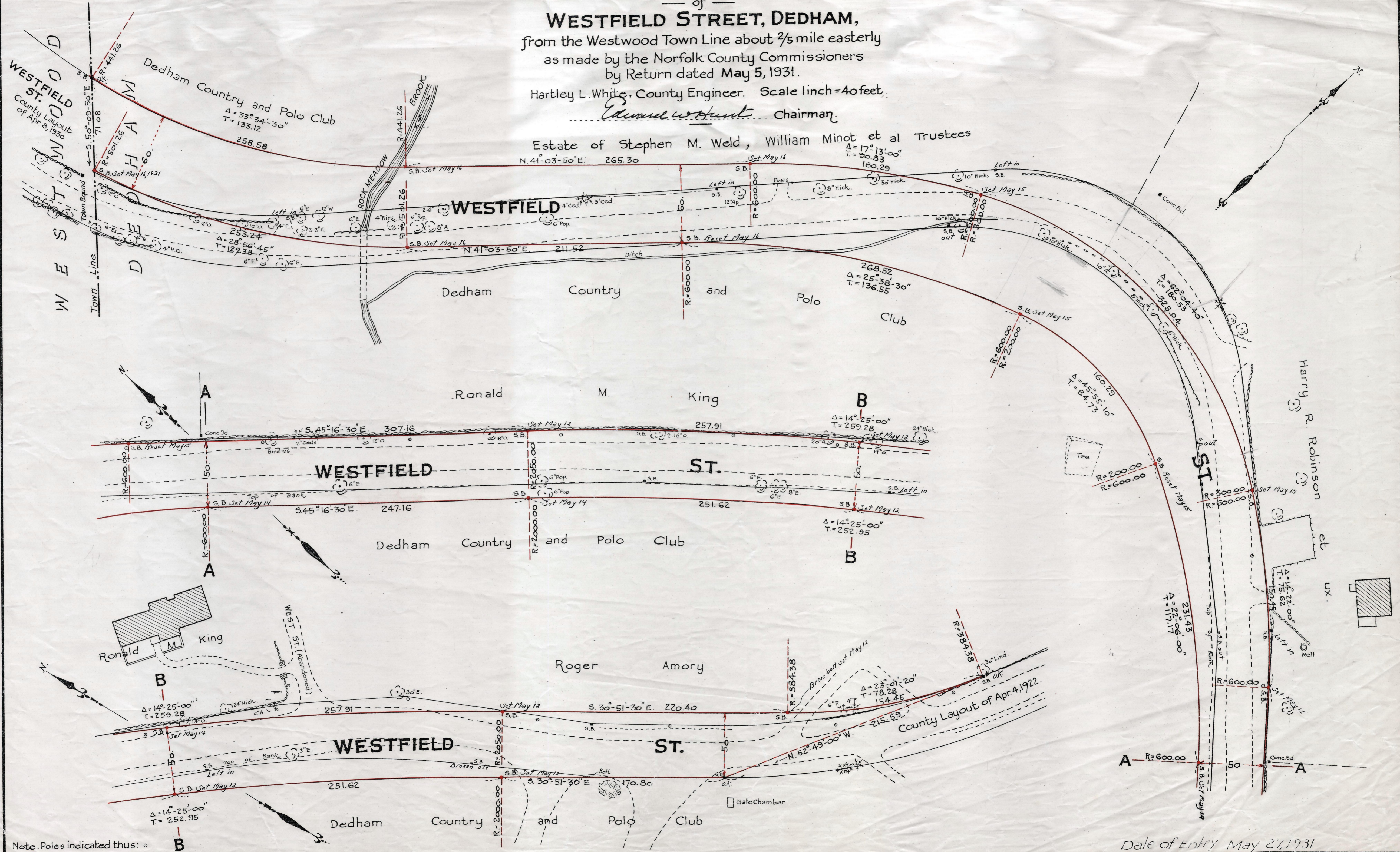


Plan showing the Relocation and Widening
of
WESTFIELD STREET, DEDHAM,
from the Westwood Town Line about 2/5 mile easterly
as made by the Norfolk County Commissioners
by Return dated May 5, 1931.

Hartley L. White, County Engineer. Scale 1 inch = 40 feet.

Edmund W. Hunt Chairman

Estate of Stephen M. Weld, William Minot et al Trustees
N. 41° 03' 50" E. 265.30



Note. Poles indicated thus: o

Date of Entry May 27, 1931

R.B. 113-353
TAKING - 1928-383
Rec. 5-14-31