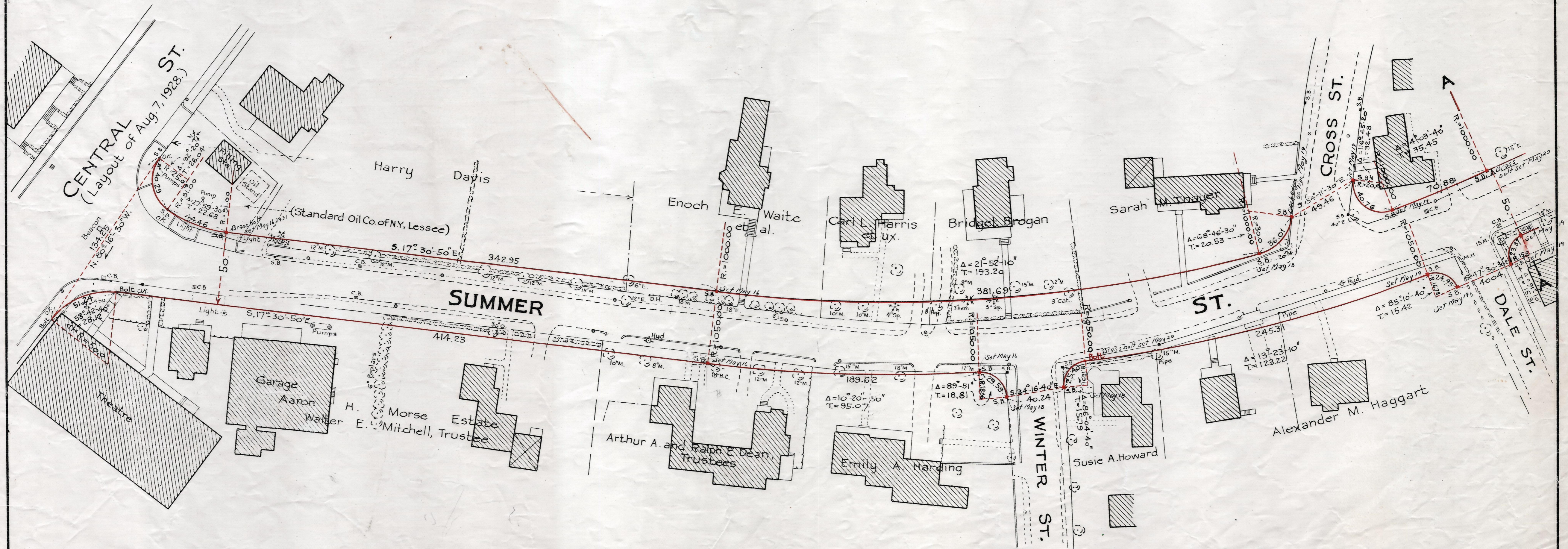
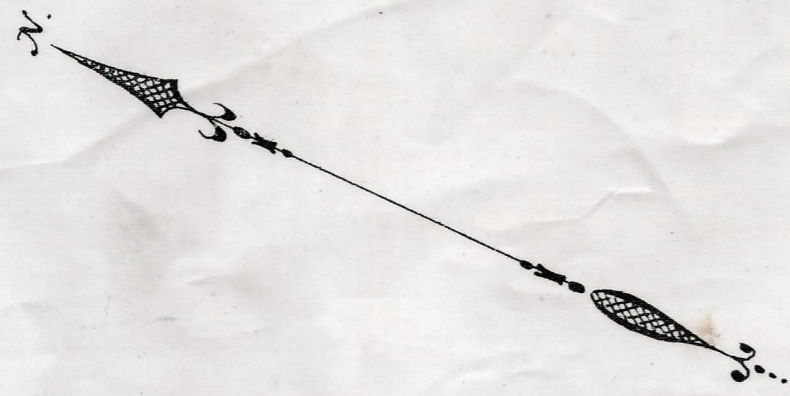


Plan showing the Relocation and Widening  
of  
**SUMMER STREET, FRANKLIN**  
from  
Central Street to King Street

as made by the Norfolk County Commissioners  
by Return dated May 5, 1931.

Hartley L. White, County Engineer. Scale 1 inch=40 feet.

*Edward W. Hunt* Chairman



Note..Poles indicated thus: ○

Date of Entry July 7, 1932

P.B. 113-354-55  
TAKING - 1928-387  
Rec. 5-14-31