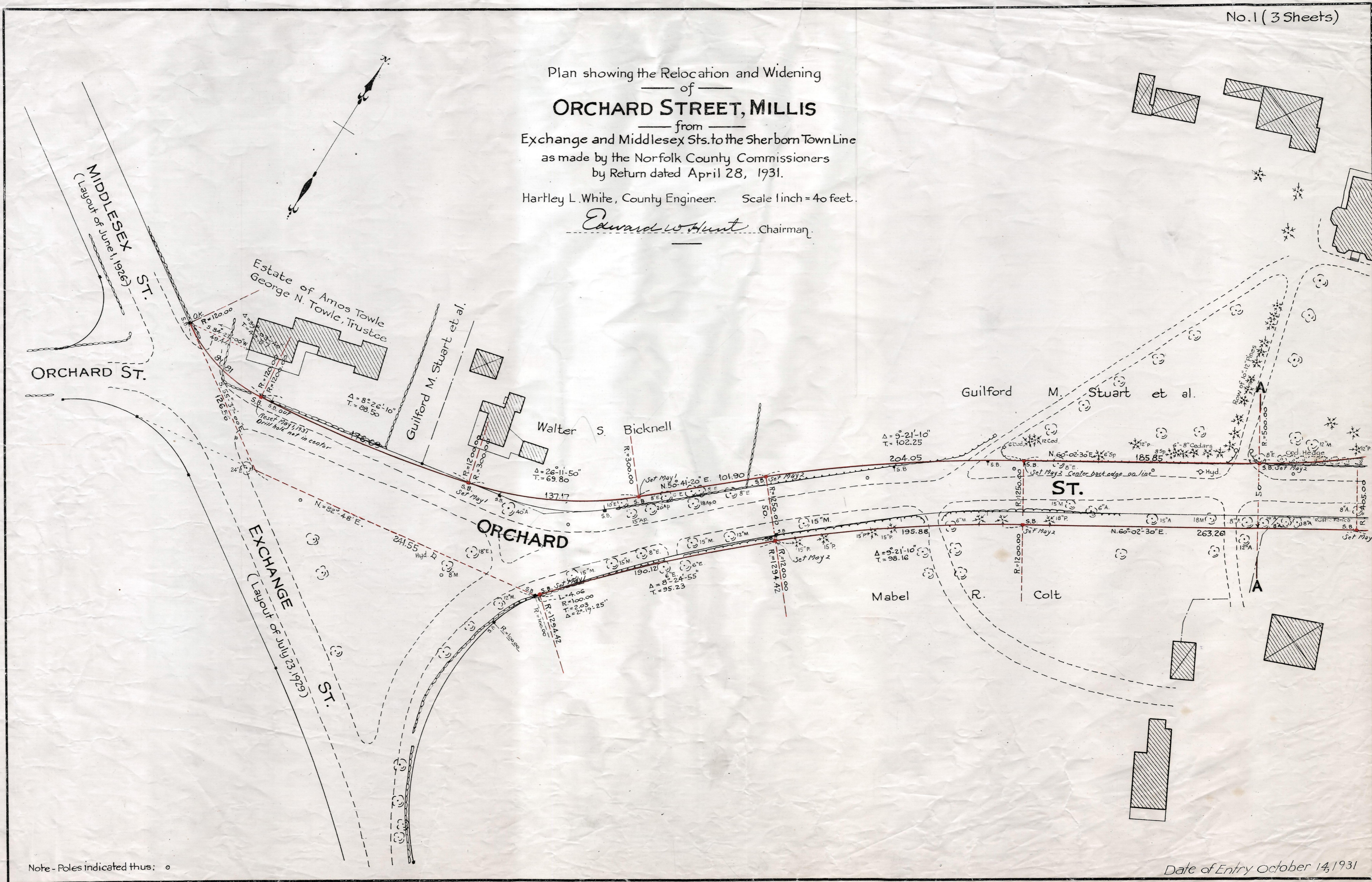


Plan showing the Relocation and Widening  
 of  
**ORCHARD STREET, MILLIS**  
 from  
 Exchange and Middlesex Sts. to the Sherborn Town Line  
 as made by the Norfolk County Commissioners  
 by Return dated April 28, 1931.

Hartley L. White, County Engineer. Scale 1 inch = 40 feet.

*Edward W. Hunt* Chairman.



Note - Poles indicated thus: ○

Date of Entry October 14, 1931

P.B. 113-336-38  
 TAKING-1927-625  
 Rec. 5-8-31