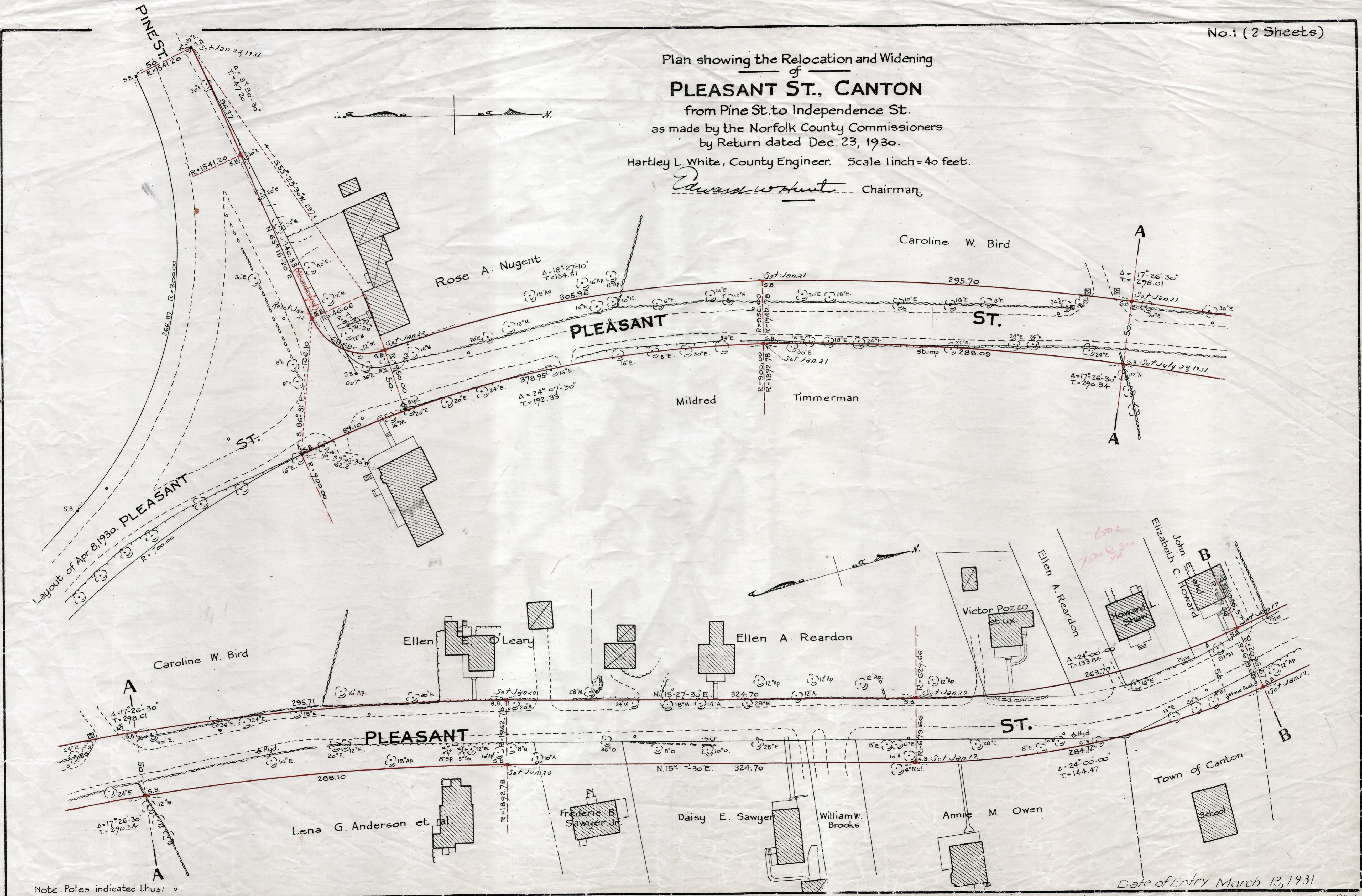


Plan showing the Relocation and Widening of PLEASANT ST., CANTON

from Pine St. to Independence St.
as made by the Norfolk County Commissioners
by Return dated Dec. 23, 1930.

Hartley L. White, County Engineer. Scale 1 inch = 40 feet.

Edward W. Hunt Chairman



Note. Poles indicated thus: o

Date of Entry March 13, 1931

P.B. 113-900-901
TAKING - 1916-281
Rec. 12-31-30