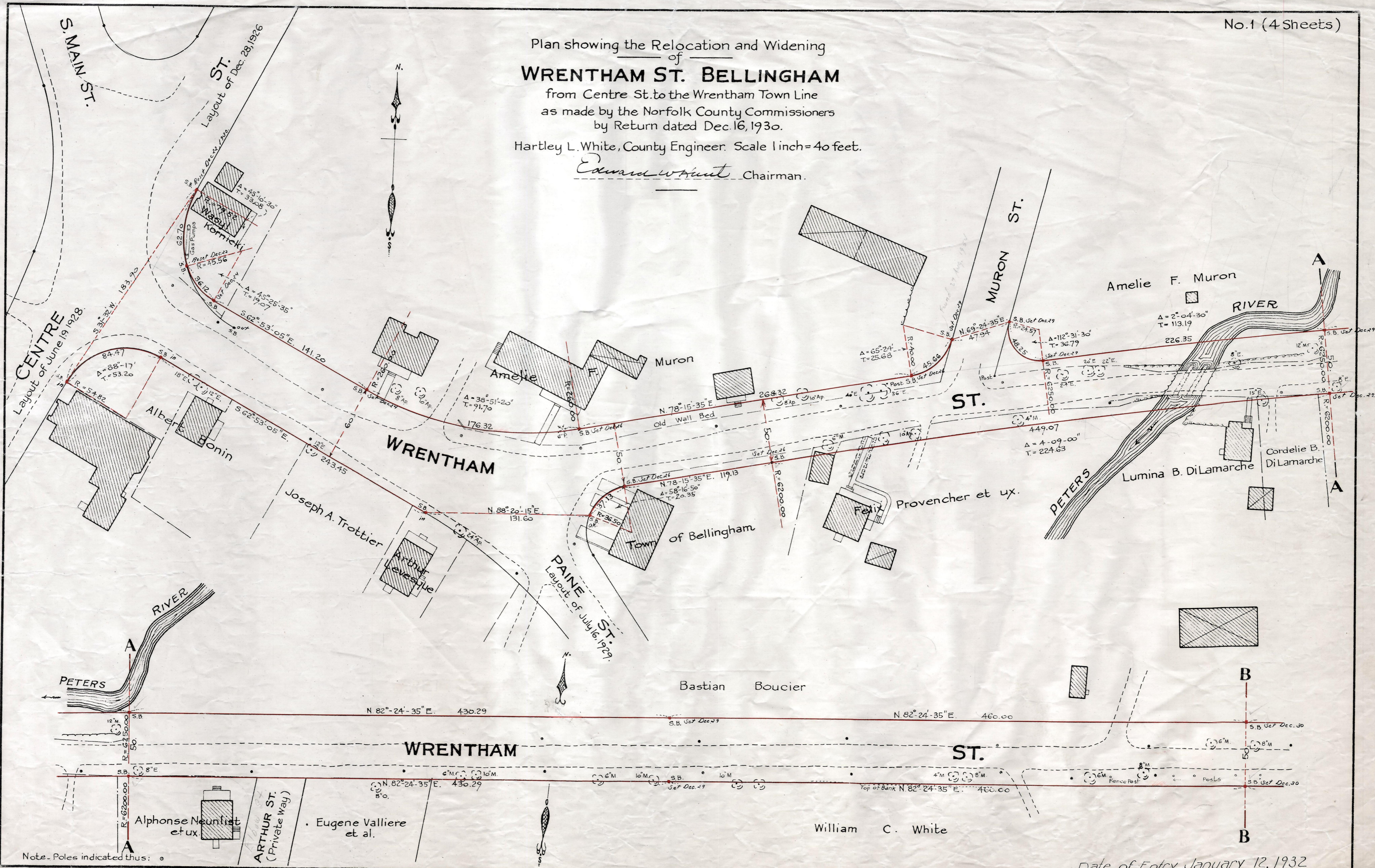


Plan showing the Relocation and Widening of WRENTHAM ST. BELLINGHAM

from Centre St. to the Wrentham Town Line
as made by the Norfolk County Commissioners
by Return dated Dec. 16, 1930.

Hartley L. White, County Engineer. Scale 1 inch = 40 feet.

Edward White Chairman.



Note. Poles indicated thus:

Date of Entry January 12, 1932

P.B. 113-876-79
TAKING - 1916-401
Rec. 12-31-30