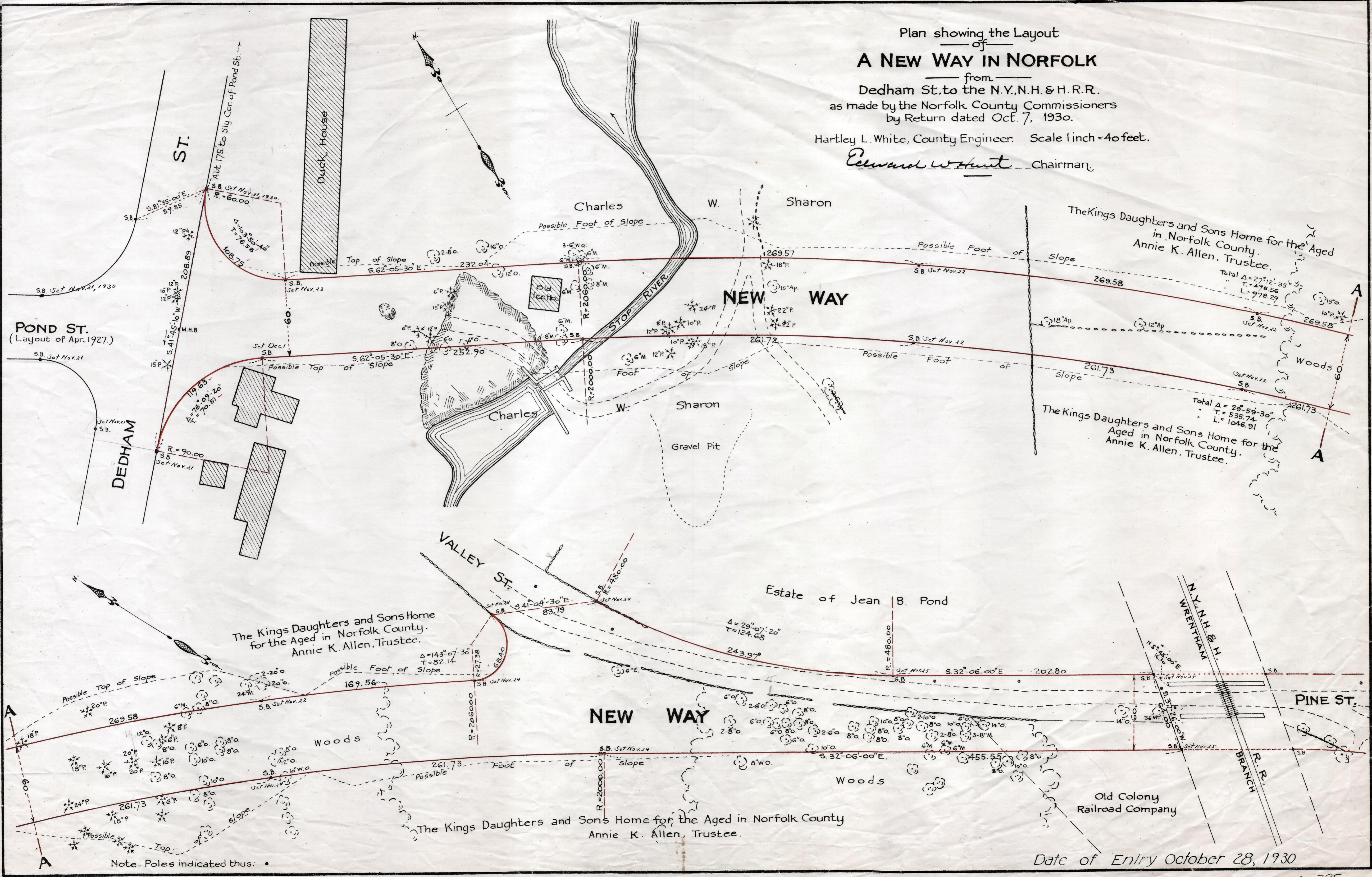


Plan showing the Layout
of
A NEW WAY IN NORFOLK

from
Dedham St. to the N.Y., N.H. & H. R. R.
as made by the Norfolk County Commissioners
by Return dated Oct. 7, 1930.

Hartley L. White, County Engineer. Scale 1 inch = 40 feet.

Edward W. Hunt Chairman.



Note. Poles indicated thus: •

Date of Entry October 28, 1930

P.B. 112-785
TAKING-1910-153
REC. 10-28-30