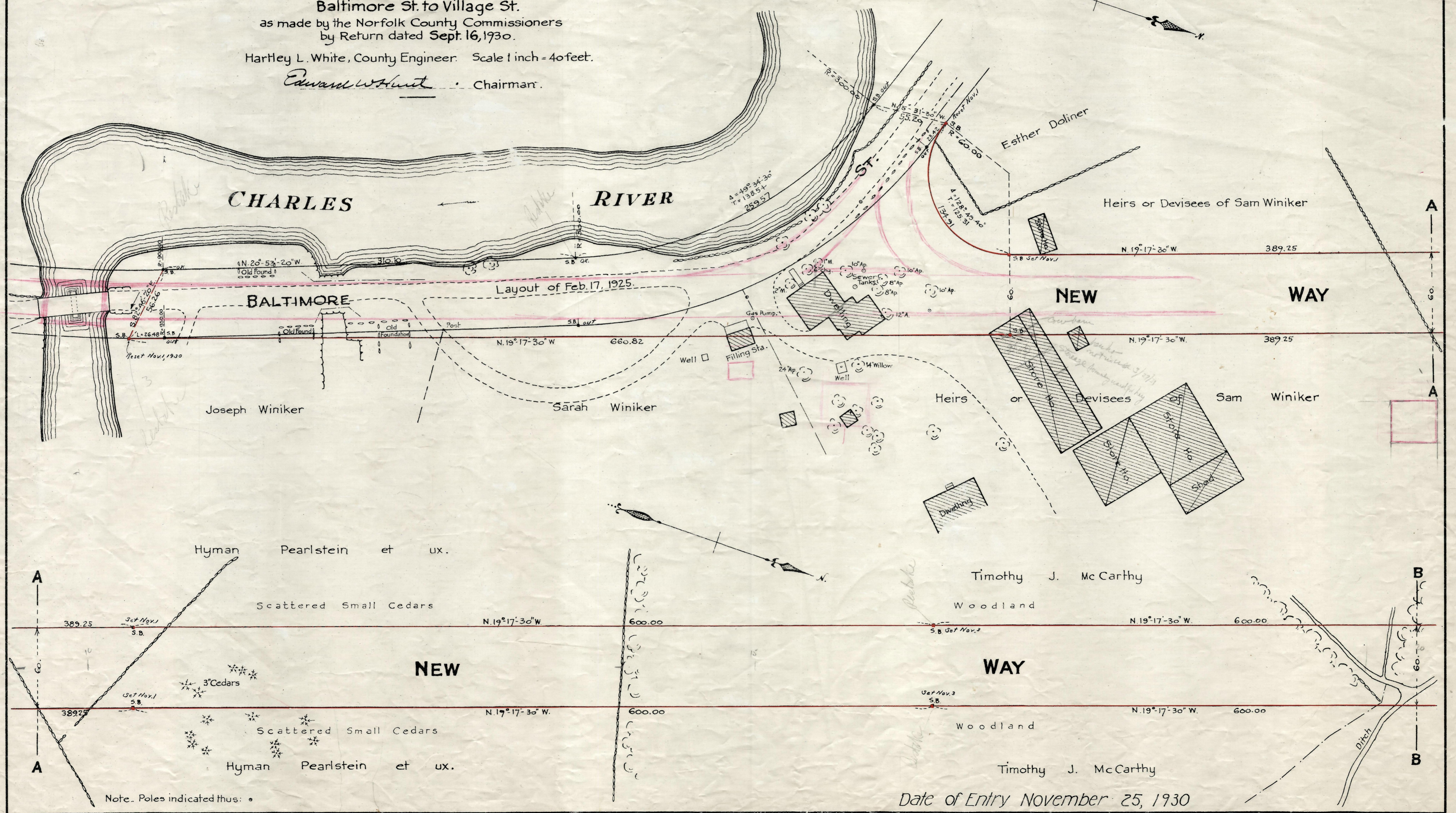


Plan showing the Layout  
of  
**A NEW WAY IN MILLIS**  
from  
**Baltimore St. to Village St.**  
as made by the Norfolk County Commissioners  
by Return dated **Sept. 16, 1930.**  
Hartley L. White, County Engineer. Scale 1 inch = 40 feet.  
*Edward W. Hunt* Chairman.



Note. Poles indicated thus: •

Date of Entry November 25, 1930

R.B. 112-741-742 of 1930  
TAKING - Book 1907 Pg. 307  
Rec. 10-1-30