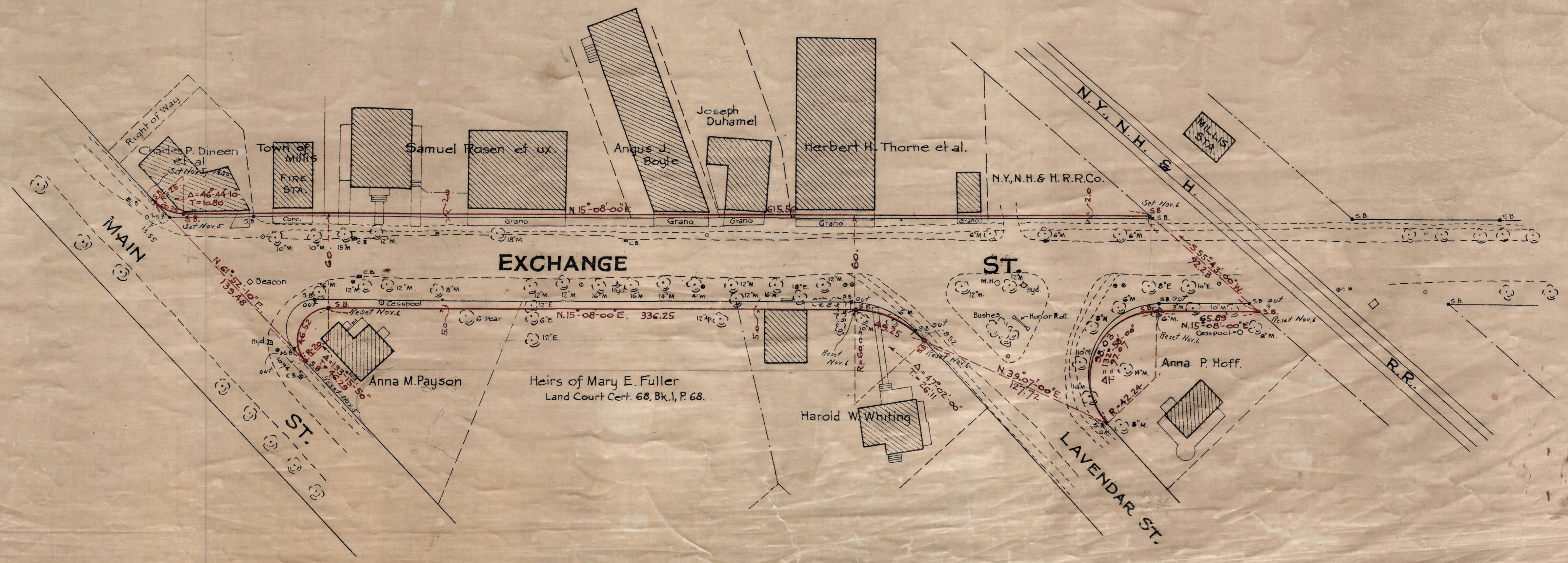
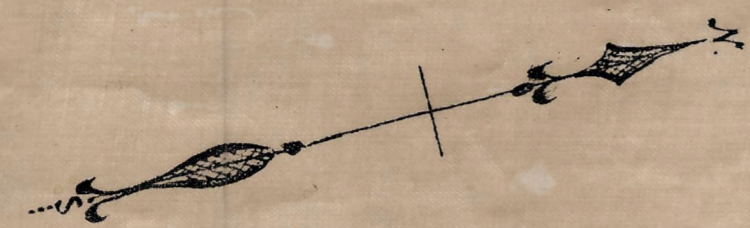


Plan showing the Relocation and Widening
of
EXCHANGE ST., MILLIS,
from
Main St. to the N.Y., N.H. & H. R.R.
as made by the Norfolk County Commissioners
by Return dated Sept. 9, 1930.

Hartley L. White, County Engineer. Scale 1 inch = 40 feet.

Edward W. Hunt Chairman.



Note - Poles indicated thus: ○

Date of Entry October 30, 1930

P.B. 112-723
TAKING -
REC. 9-19-30