

Plan showing the Relocation and Widening

# SUMMER ST., FRANKLIN

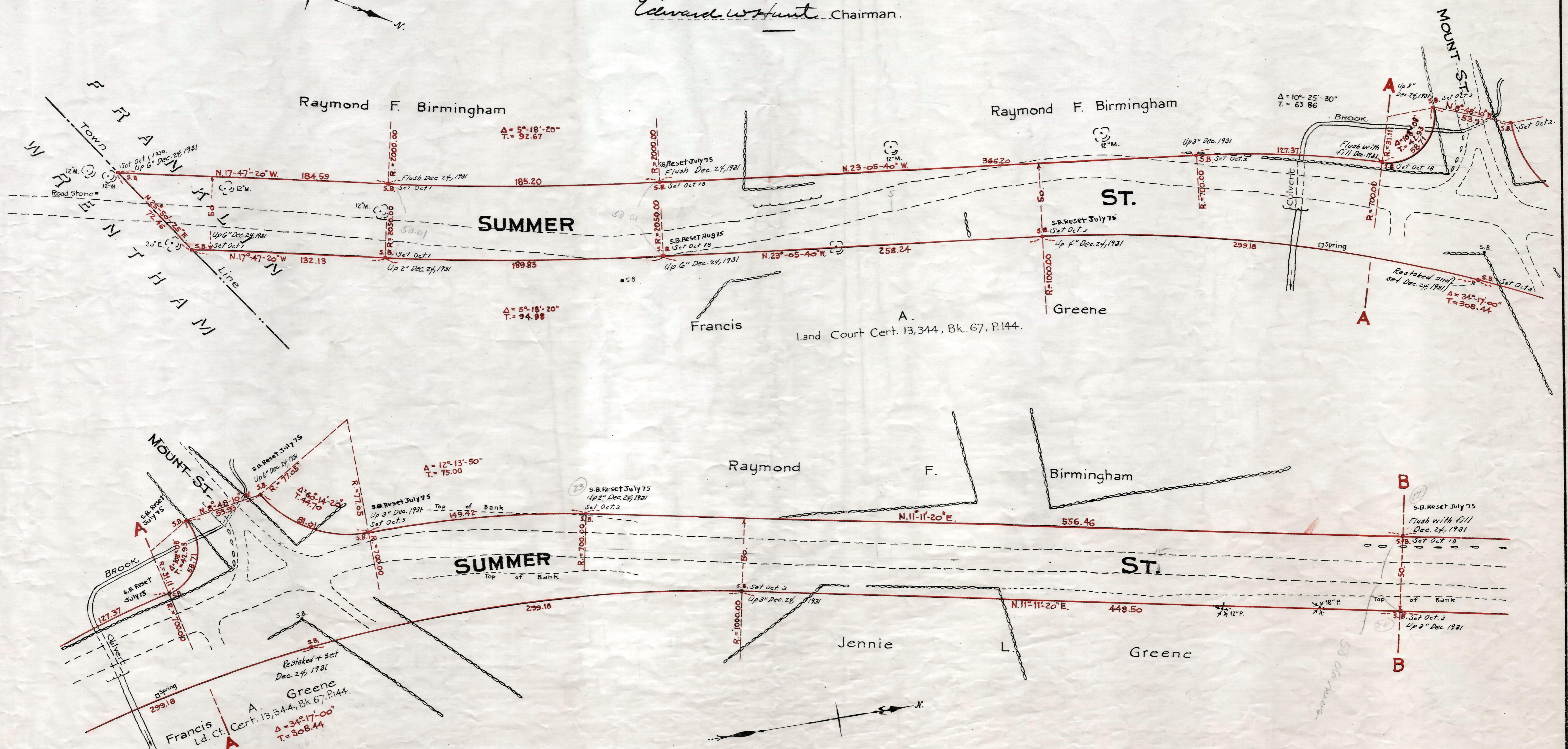
from  
The Wrentham Town Line to King St.

as made by the Norfolk County Commissioners  
by Return dated July 15, 1930.

Hartley L. White, County Engineer. Scale 1 inch = 40 feet.

*Edward W. Hunt* Chairman.

*See sheet to sheet 5  
Reset 2  
Set Reset 1  
Set to field 1*



Note: Poles indicated thus:  $\odot$

Date of Entry August 5, 1930

P.B. 112-603-607  
TAKING - 1899-485  
Rec. 7-30-30