

Get Plan at all one day
Dec 28 - 3 o'clock

No. 1 (6 Sheets)

Level to full 2 for sheet
Raised -

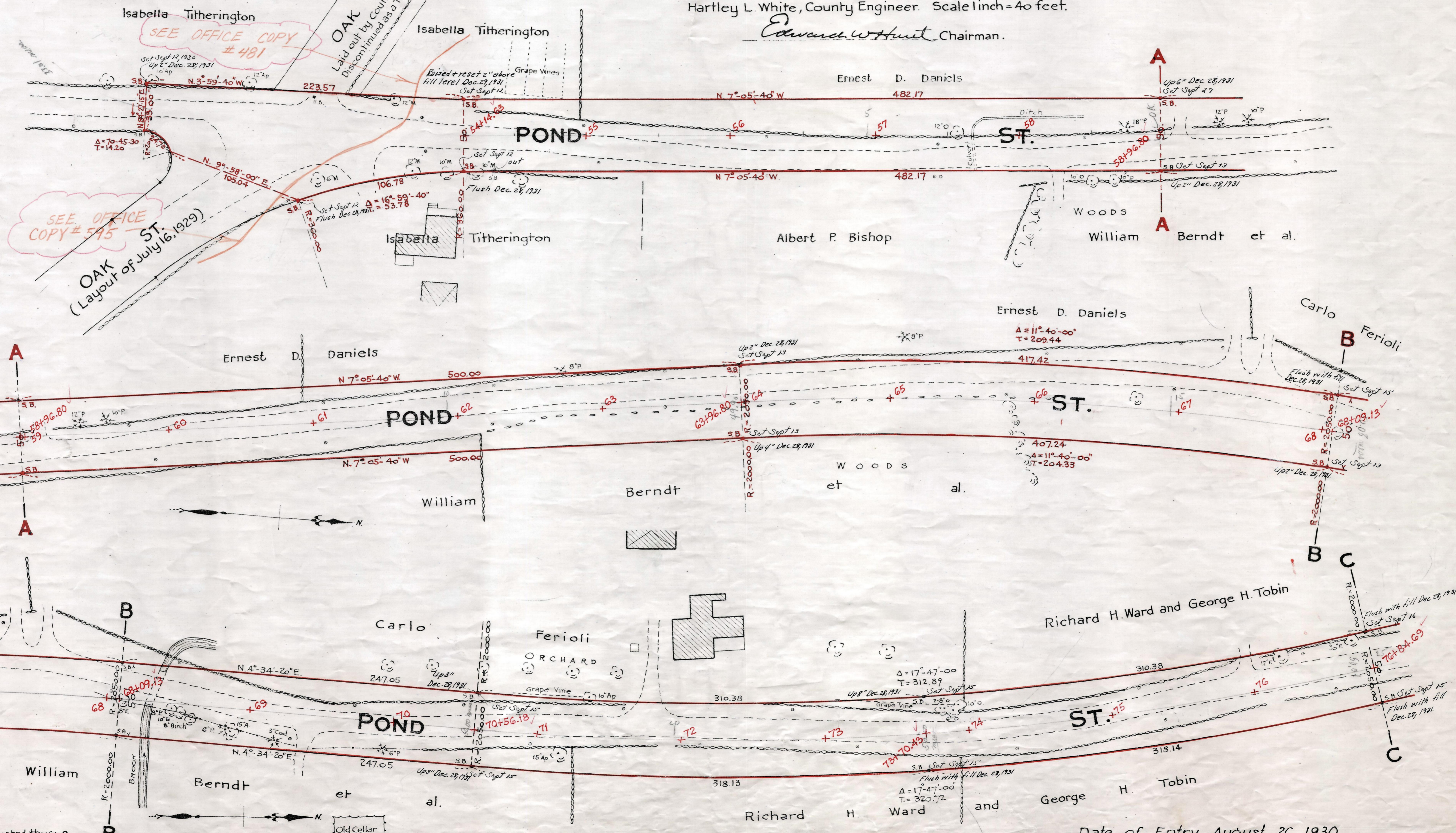
Plan showing the Relocation and Widening of

POND ST., FRANKLIN

from Oak St. to the Medway Town Line
as made by the Norfolk County Commissioners
by Return dated July 1, 1930.

Hartley L. White, County Engineer. Scale 1 inch = 40 feet.

Edward W. Hunt Chairman.



Note: Poles indicated thus: o

Date of Entry August 26, 1930

Recorded 1897-381
PLBK 112 Plans 564-569 incl scale P. 112 of 1930
Rec. 7-10-30