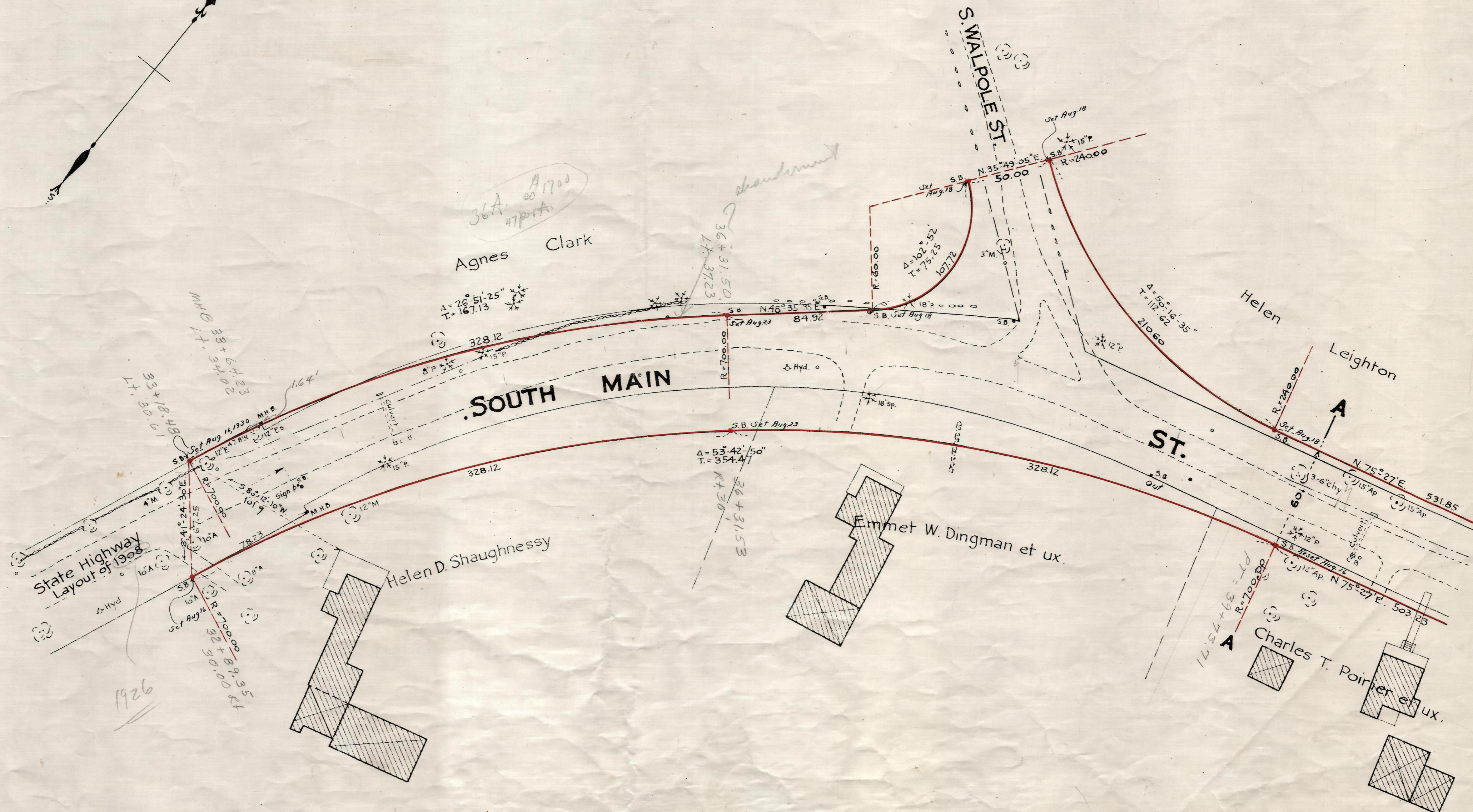
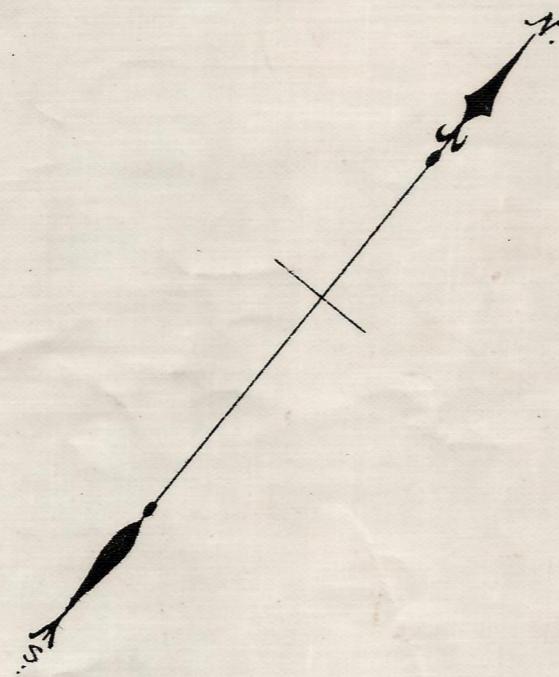


Plan showing the Relocation and Widening of **SOUTH MAIN ST., SHARON**
from a point 500 ft. west of South Walpole St. to the N.Y., N.H. & H. R.R.
as made by the Norfolk County Commissioners by Return dated June 3, 1930.

Hartley L. White, County Engineer. Scale 1 inch = 40 feet.

Edward W. Hunt Chairman.



Note - Poles indicated thus: o

Date of Entry June 30, 1930

P.B. 112-520
TAKING
Rec. 6-23-30