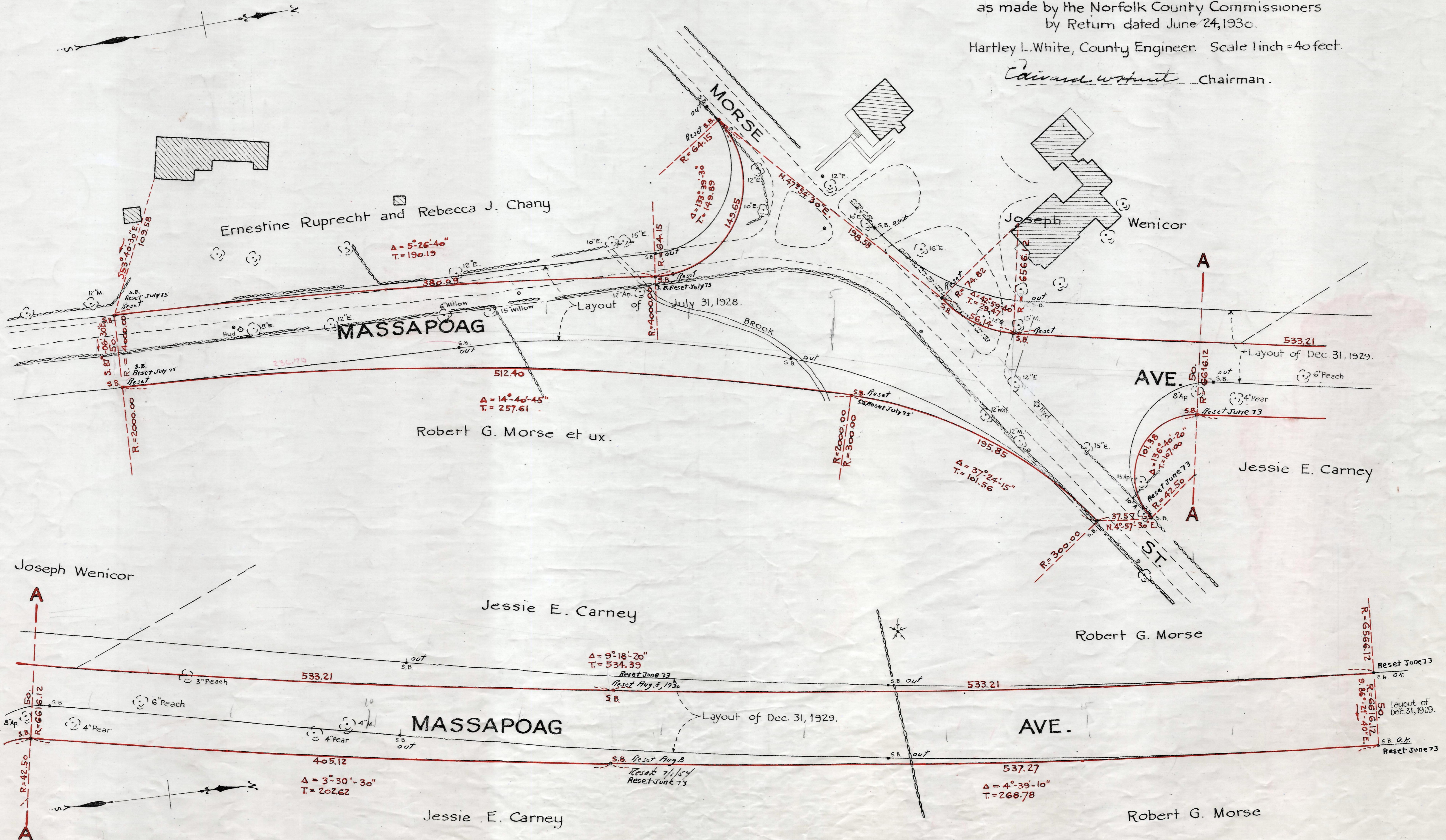


Plan showing the Relocation and Widening
of
MASSAPOAG AVE., SHARON,
Near Morse Street

as made by the Norfolk County Commissioners
by Return dated June 24, 1930.
Hartley L. White, County Engineer. Scale 1 inch = 40 feet.

Edward Whit Chairman.



Note: Poles indicated thus: ○

Date of Entry June 24, 1930

P.B. 112-563
TAKING -
Rec - 7-10-30