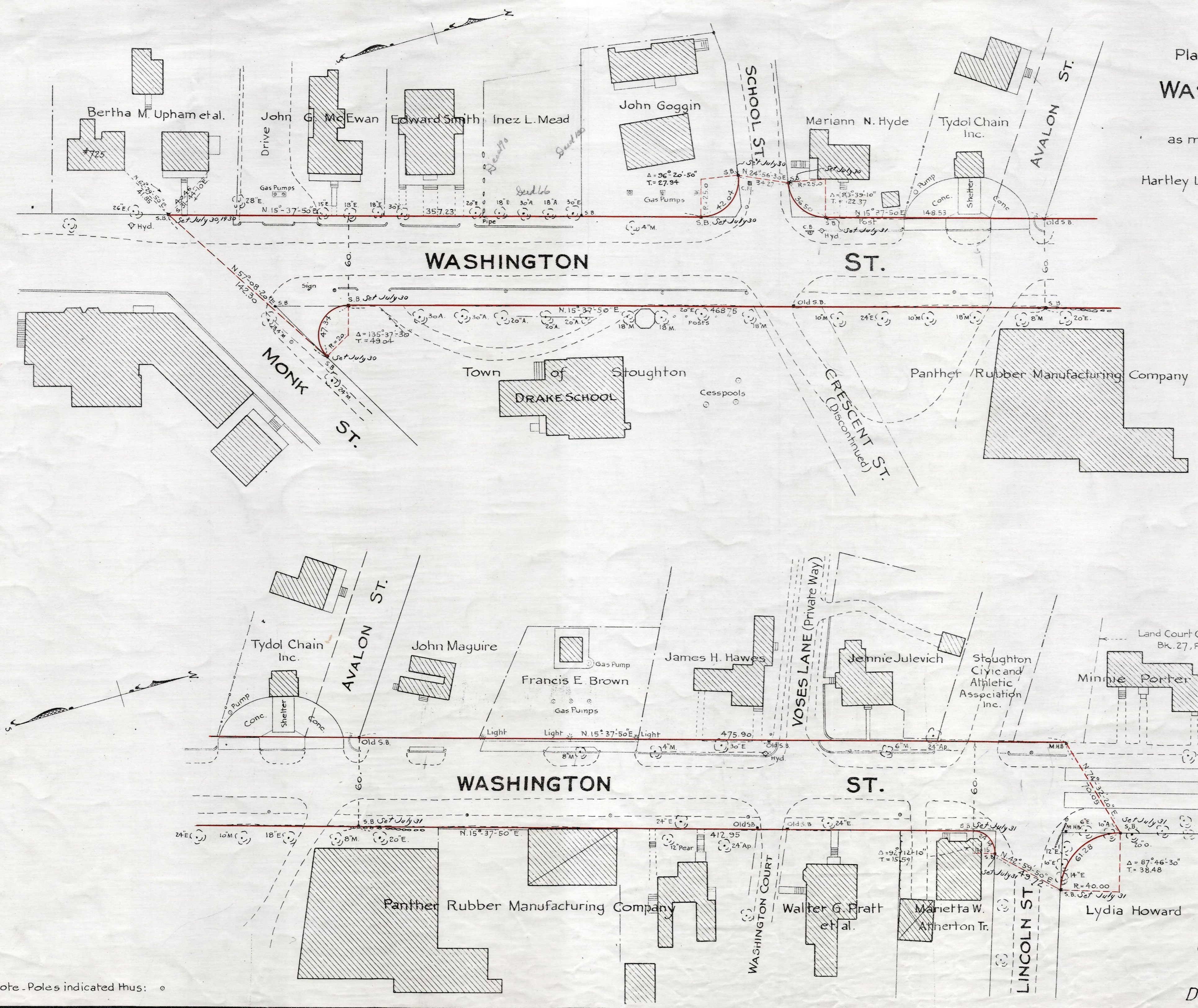


Plan showing the Relocation and Widening  
of  
**WASHINGTON ST., STOUGHTON**  
from

Monk St. to Lincoln St.  
as made by the Norfolk County Commissioners  
by Return dated May 20, 1930.

Hartley L. White, County Engineer. Scale 1 inch = 40 feet.

*Edward W. Hunt* Chairman.



Note - Poles indicated thus: ○

Date of Entry June 2, 1930

p.B. 112-468  
TAKING - 1893-422  
Rec. - 6-4-30