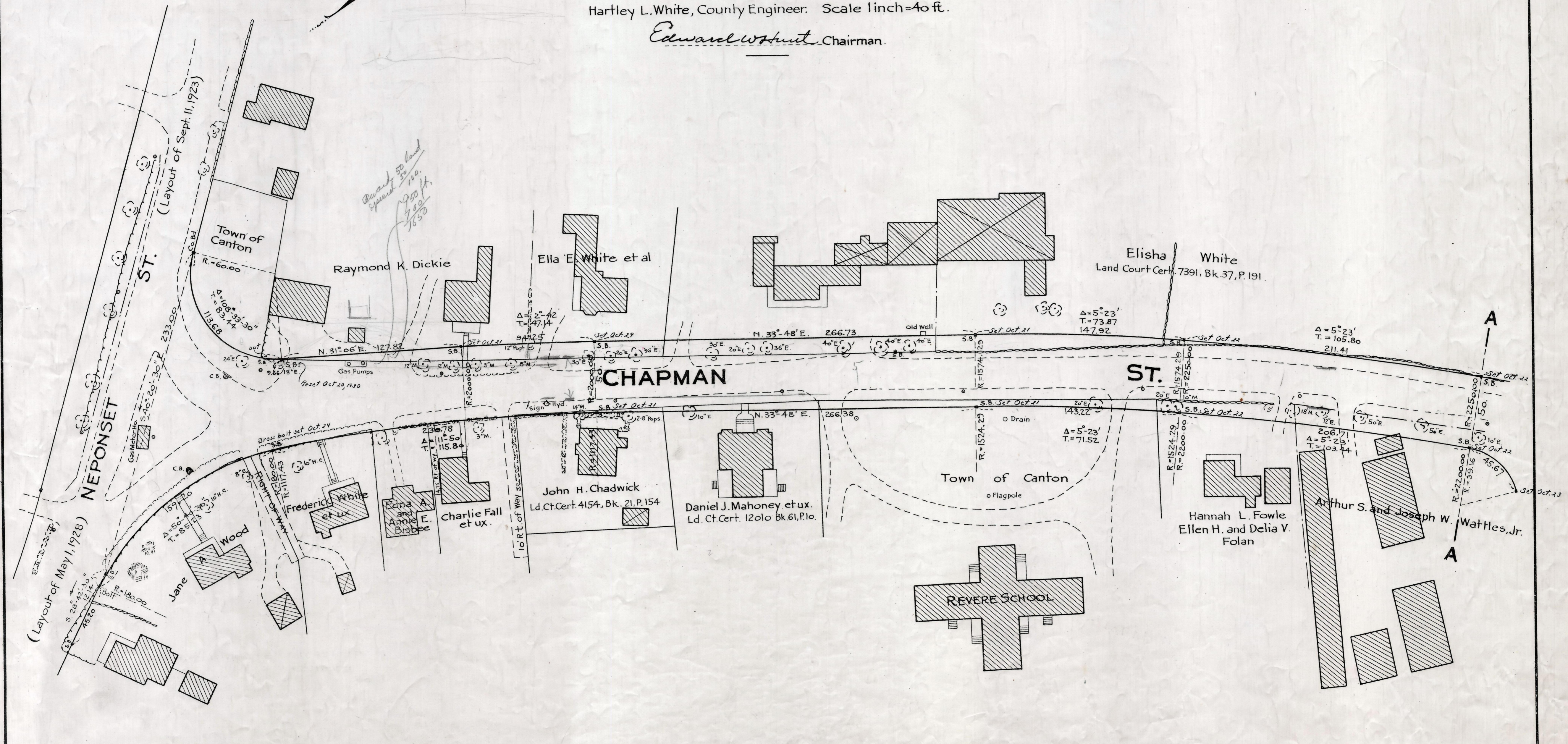


Plan showing the Relocation and Widening  
of  
**CHAPMAN ST. CANTON**  
from  
Neponset St. to the N.Y., N.H. & H.R.R.  
as made by the Norfolk County Commissioners  
by Return dated April 29, 1930.  
Hartley L. White, County Engineer. Scale 1 inch = 40 ft.  
Edward W. Hunt Chairman.



Note - Poles indicated thus: o

Date of Entry May 28, 1930

R.B. 111-416-417  
TAKING - 1891-245  
Rec - 5-14-30