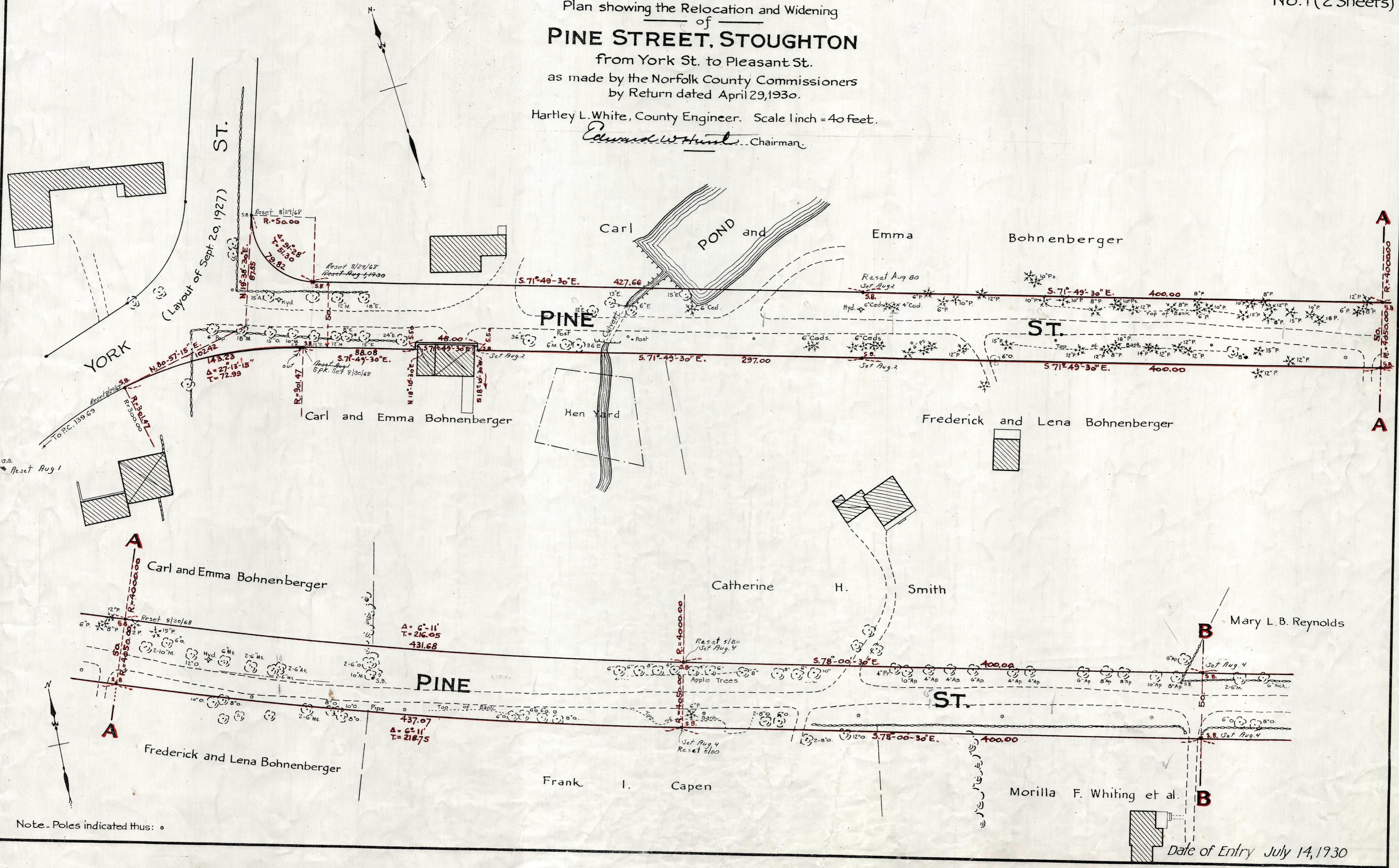


Plan showing the Relocation and Widening of PINE STREET, STOUGHTON

from York St. to Pleasant St.
as made by the Norfolk County Commissioners
by Return dated April 29, 1930.

Hartley L. White, County Engineer. Scale 1 inch = 40 feet.

Edmund W. Hunt Chairman



Note - Poles indicated thus: ◦

Date of Entry July 14, 1930

P.B. 112-441-442
TAKING - 1892-453
REC - 5-27-30