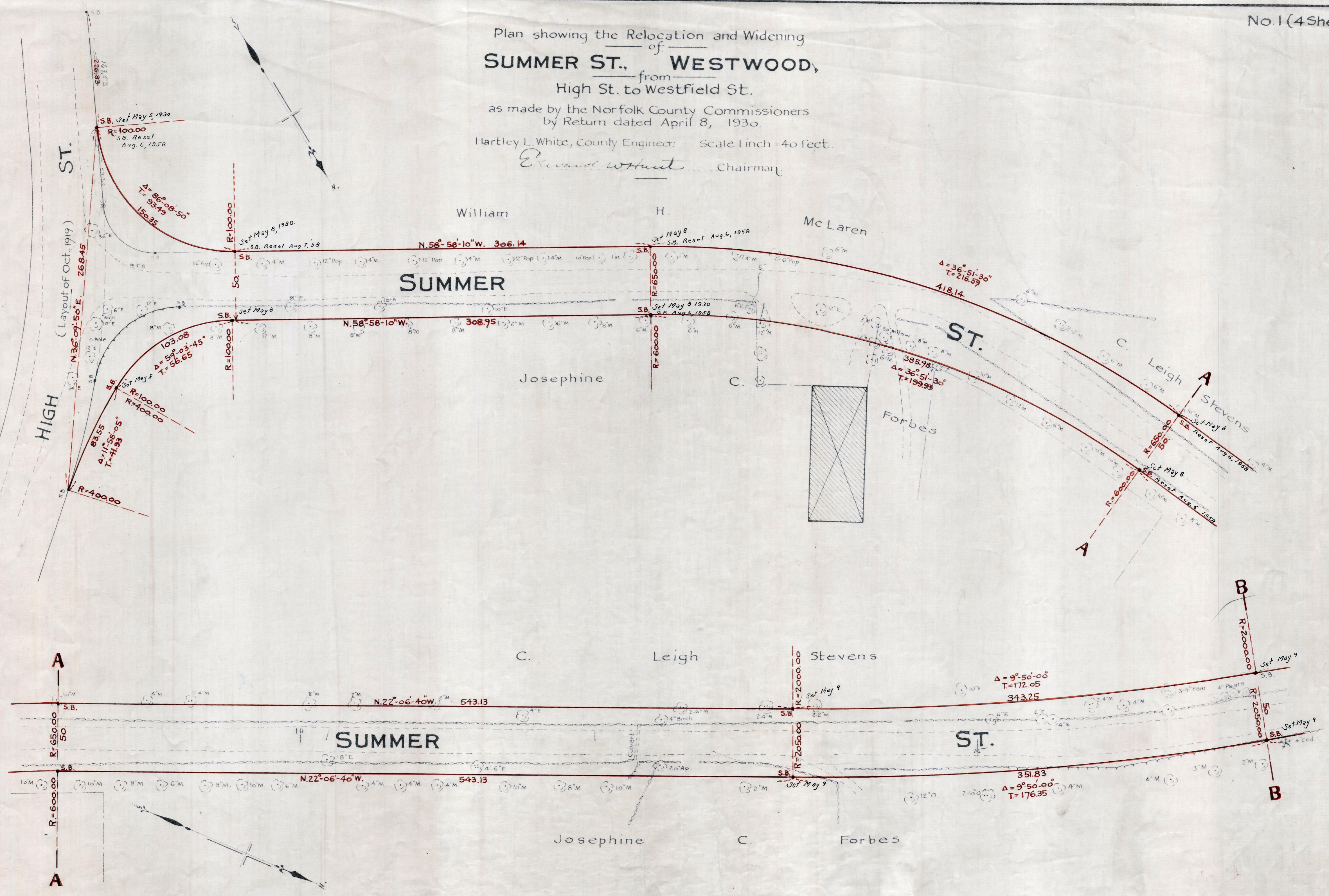


# Plan showing the Relocation and Widening of **SUMMER ST., WESTWOOD,** from High St. to Westfield St.

as made by the Norfolk County Commissioners  
by Return dated April 8, 1930.  
Hartley L. White, County Engineer: Scale 1 inch = 40 feet.  
*Edward W. Hunt* Chairman.



Note: Poles indicated thus:  $\odot$

Date of Entry April 10, 1930

P.B. 111-252-255  
TAKING-1887-504  
Rec-4-14-30