

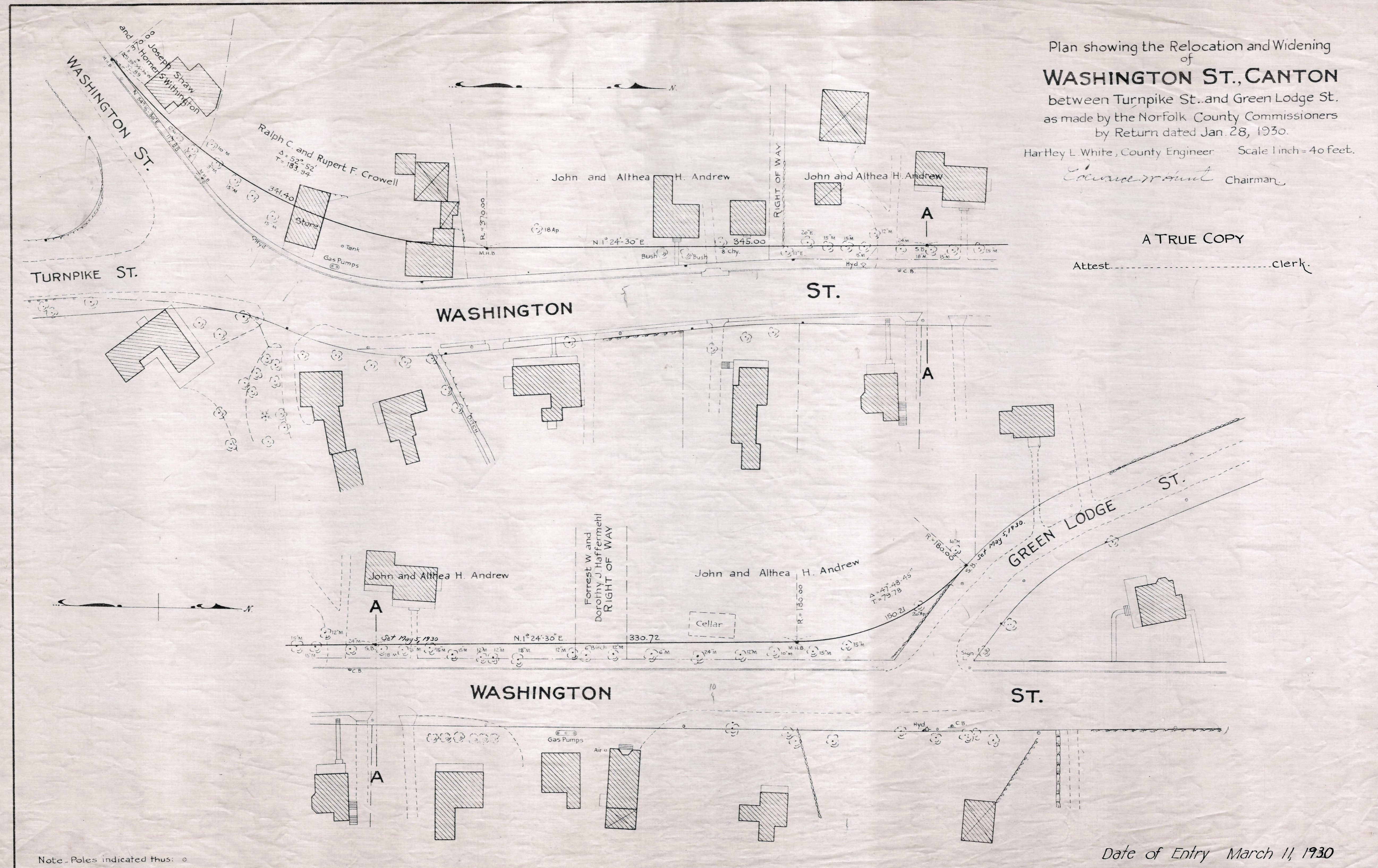
Plan showing the Relocation and Widening of
WASHINGTON ST., CANTON
 between Turnpike St. and Green Lodge St.
 as made by the Norfolk County Commissioners
 by Return dated Jan. 28, 1930.

Harley L. White, County Engineer Scale 1 inch = 40 feet.

Edmond ... Chairman

A TRUE COPY

Attest..... clerk.



Note - Poles indicated thus: ○

Date of Entry March 11, 1930

P.B. 111-95
 TAKING - 1882-376
 Rec - 2-24-30
 Modern B.P.C.
 51 Cornhill

18
 345
 330
 90
 93