

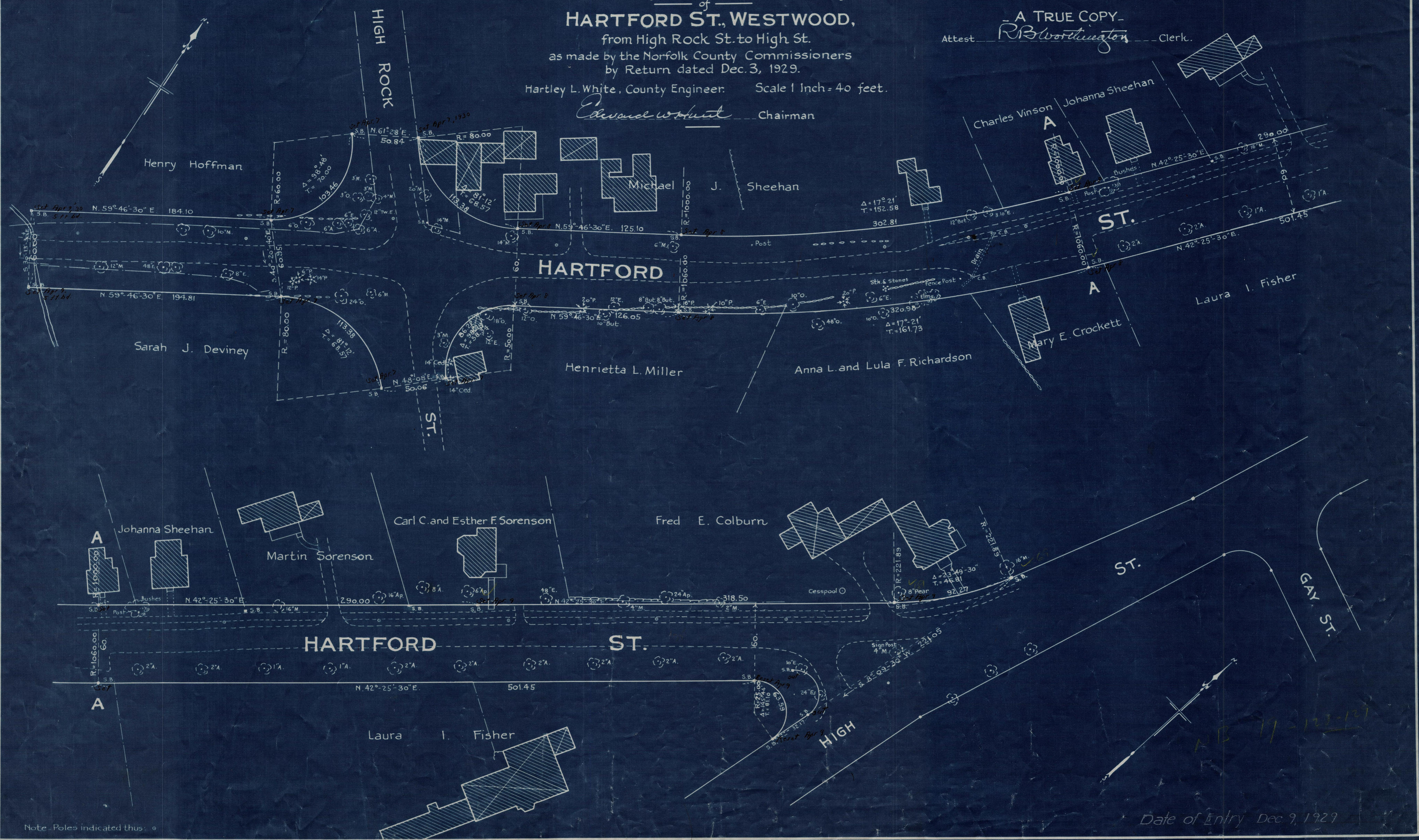
Plan showing the Relocation and Widening
of
HARTFORD ST., WESTWOOD,
from High Rock St. to High St.

as made by the Norfolk County Commissioners
by Return dated Dec. 3, 1929.

Hartley L. White, County Engineer. Scale 1 Inch = 40 feet.

Edward W. White Chairman

A TRUE COPY
Attest *R. B. Worthington* Clerk.



Note - Poles indicated thus: ○

Date of Entry Dec 9, 1929