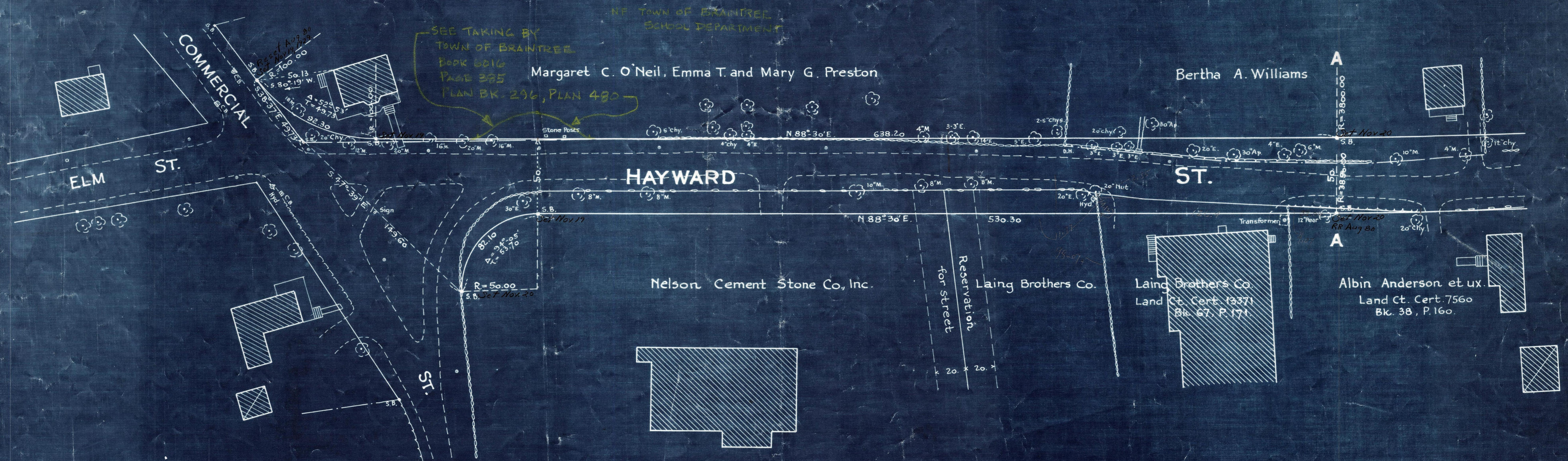



Plan showing the Relocation and Widening  
of  
**HAYWARD ST., BRAINTREE**  
as made by the Norfolk County Commissioners  
by Return dated Oct. 1, 1929.

Hartley L. White, County Engineer Scale 1 inch = 40 feet.

*Edward W. Hunt* Chairman

A TRUE COPY.  
Attest *R. B. Worthington* Clerk.



Note - Poles indicated thus: 

Date of Entry October 16, 1929