

Plan showing the Relocation and Widening

# CLARK ST., NORFOLK

as made by the Norfolk County Commissioners  
by Return dated ~~OCT 10~~ 1929.

Hartley L. White, County Engineer. Scale 1 inch = 40 feet.

*Edward W. Hunt* Chairman

A TRUE COPY  
Attest: *R. B. Worthington* Clerk

Commonwealth of Massachusetts

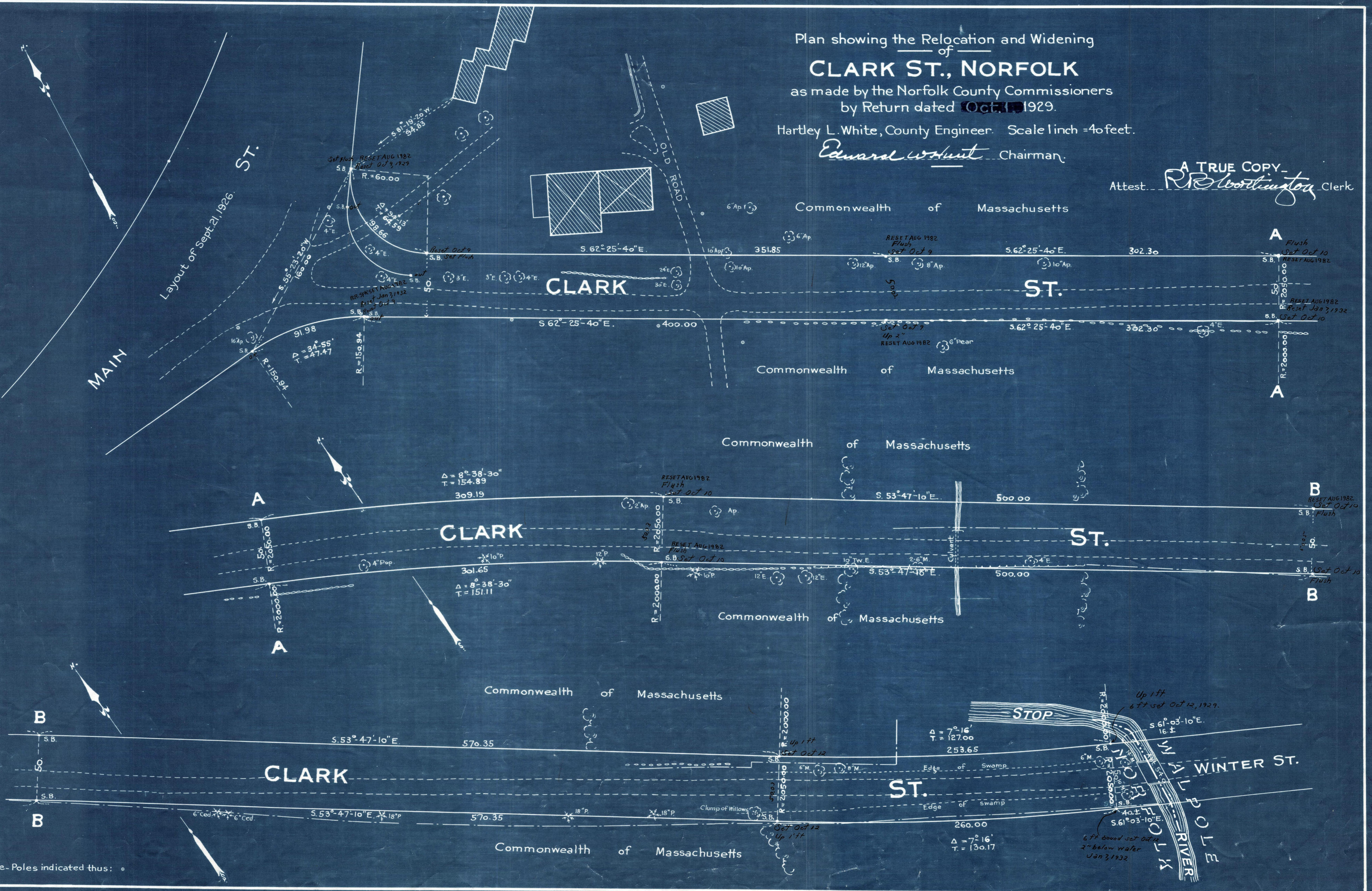
Commonwealth of Massachusetts

Commonwealth of Massachusetts

Commonwealth of Massachusetts

Commonwealth of Massachusetts

Commonwealth of Massachusetts



Note. Poles indicated thus: •

Date of Entry December 2, 1929