

Plan showing the Relocation and Widening

OAK STREET, FRANKLIN

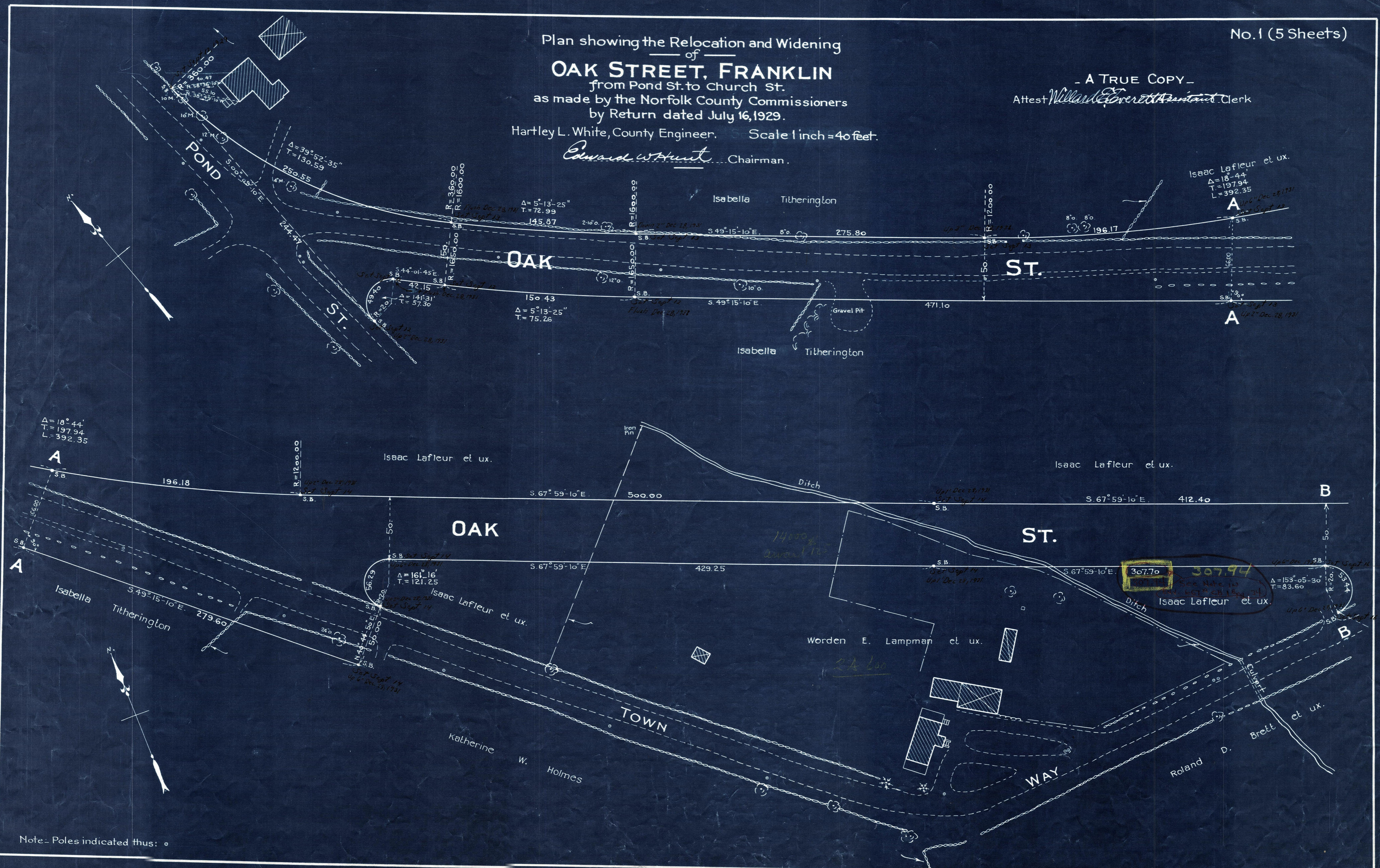
from Pond St. to Church St.
as made by the Norfolk County Commissioners
by Return dated July 16, 1929.

Hartley L. White, County Engineer. Scale 1 inch = 40 feet.

Edward W. Hunt Chairman.

- A TRUE COPY -

Attest *Willard E. Everett* Clerk



Note: Poles indicated thus: \circ

Date of Entry August 22, 1929