

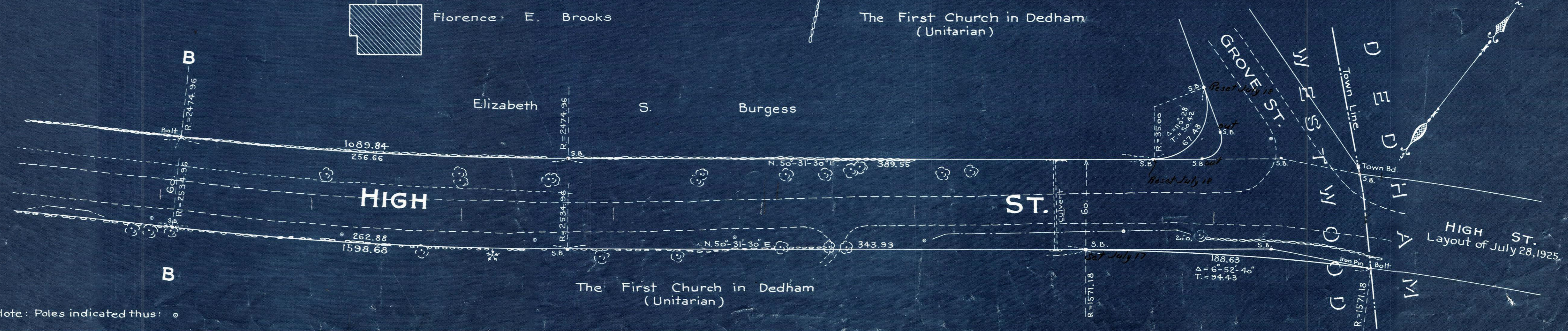
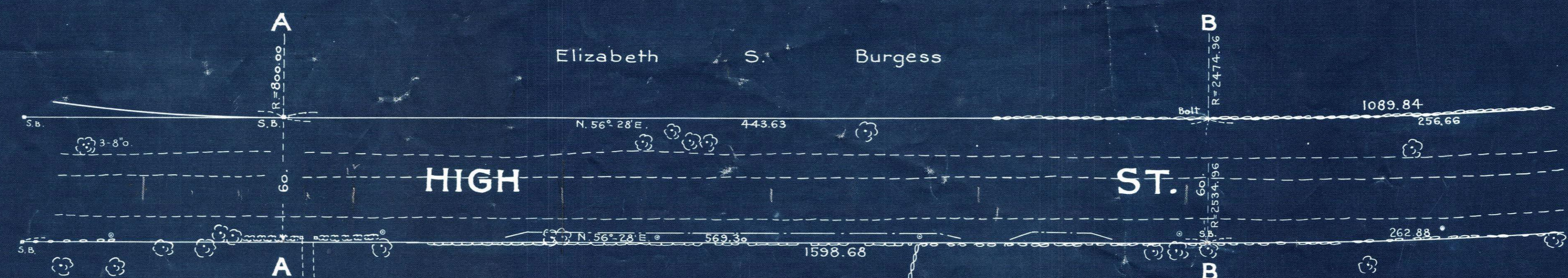
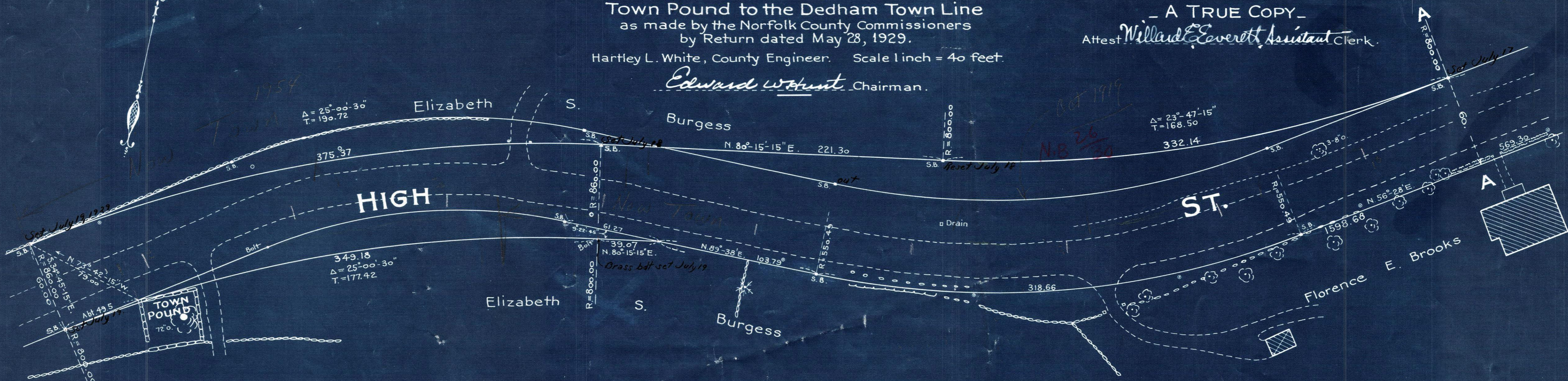
Plan showing the Relocation and Widening
of
HIGH ST., WESTWOOD
from the

Town Pound to the Dedham Town Line
as made by the Norfolk County Commissioners
by Return dated May 28, 1929.

Hartley L. White, County Engineer. Scale 1 inch = 40 feet.

Edward Wakent Chairman.

- A TRUE COPY -
Attest *Willard E. Everett* Assistant Clerk.



Note: Poles indicated thus: \circ

Date of June 22, 1929