

# Plan showing the Relocation and Widening of **WINTHROP ST., MEDWAY** from

Main St. to Adams St.

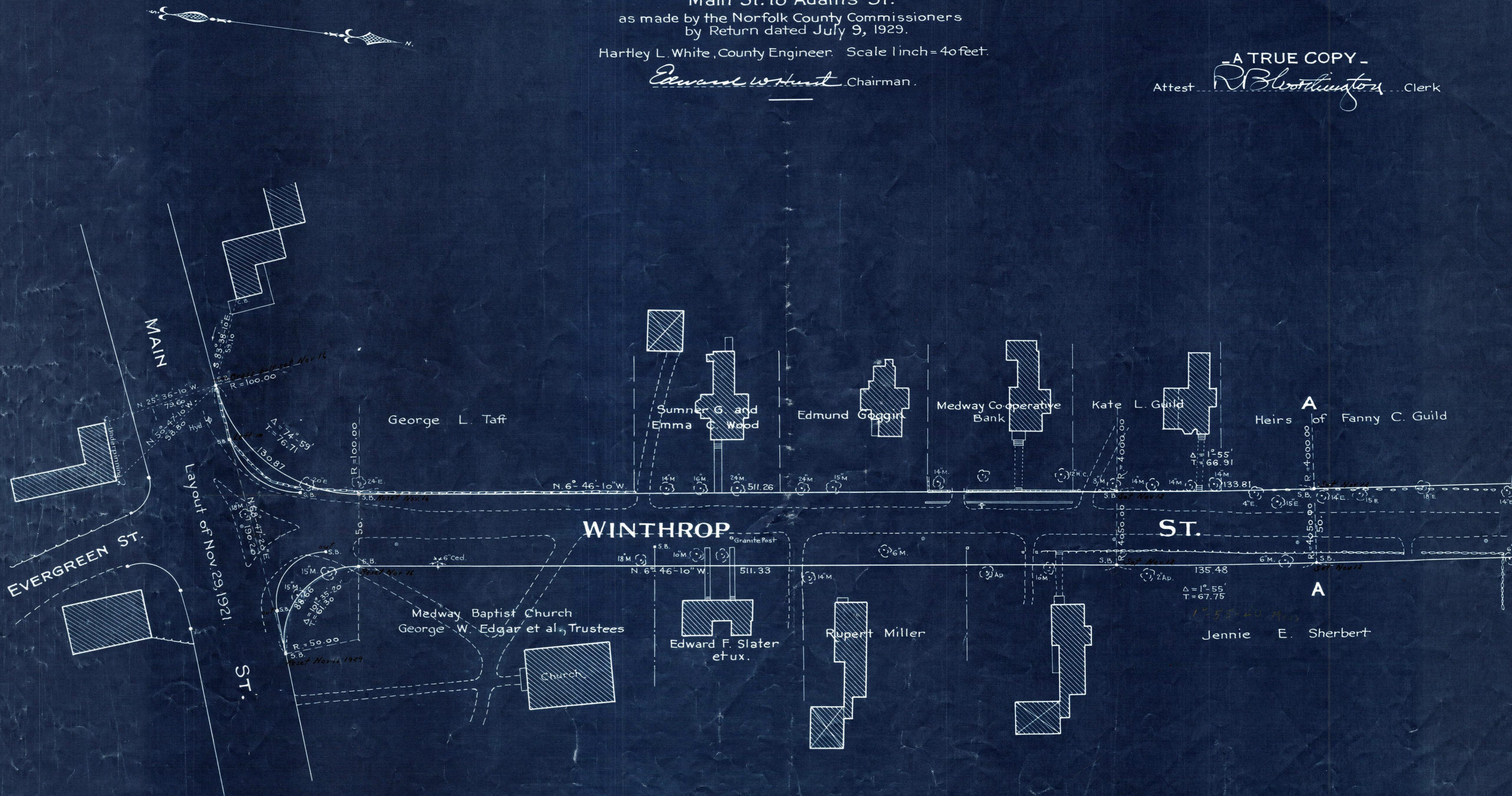
as made by the Norfolk County Commissioners  
by Return dated July 9, 1929.

Hartley L. White, County Engineer. Scale 1 inch = 40 feet.

*Edward W. Hunt* Chairman.

- A TRUE COPY -

Attest *R. B. Worthington* Clerk



Note: Poles indicated thus: ○

Date of Entry July 29, 1929