

Plan showing the Relocation and Widening
of
WASHINGTON ST., CANTON
from

Sherman St. to Lewis St.

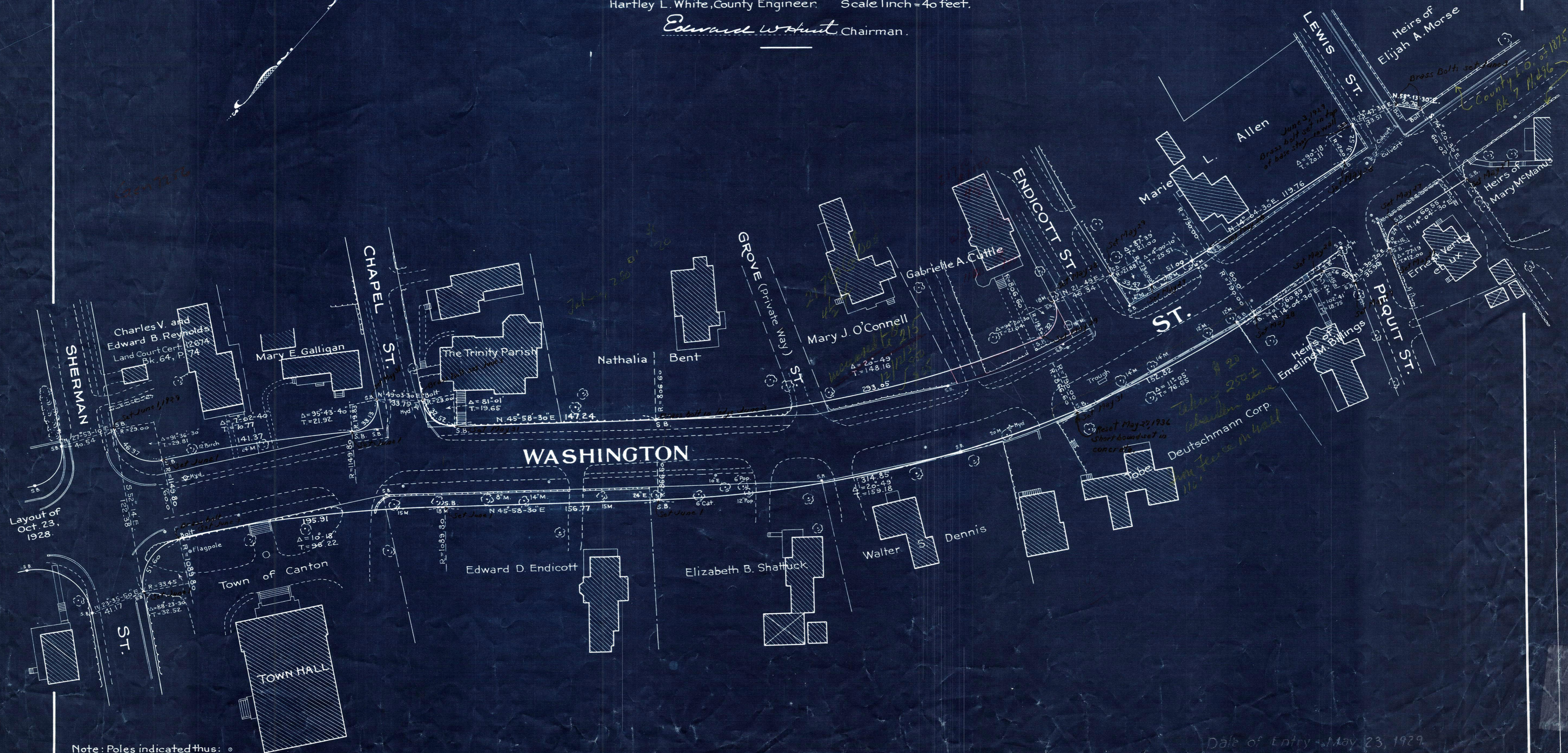
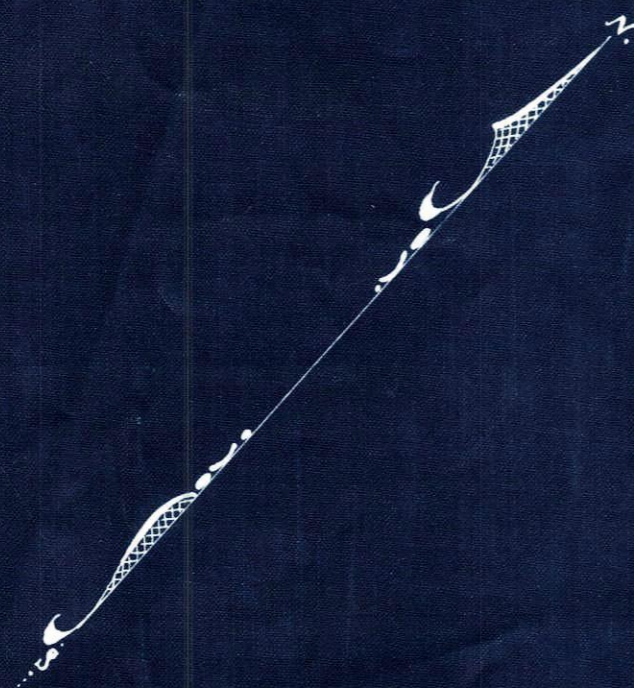
as made by the Norfolk County Commissioners
by Return dated May 14, 1929.

Hartley L. White, County Engineer. Scale 1 inch = 40 feet.

Edward W. Hunt Chairman.

- A TRUE COPY -

Attest: *R.B. Worthington* Clerk.



Note: Poles indicated thus: o

Date of Entry: May 23, 1929