

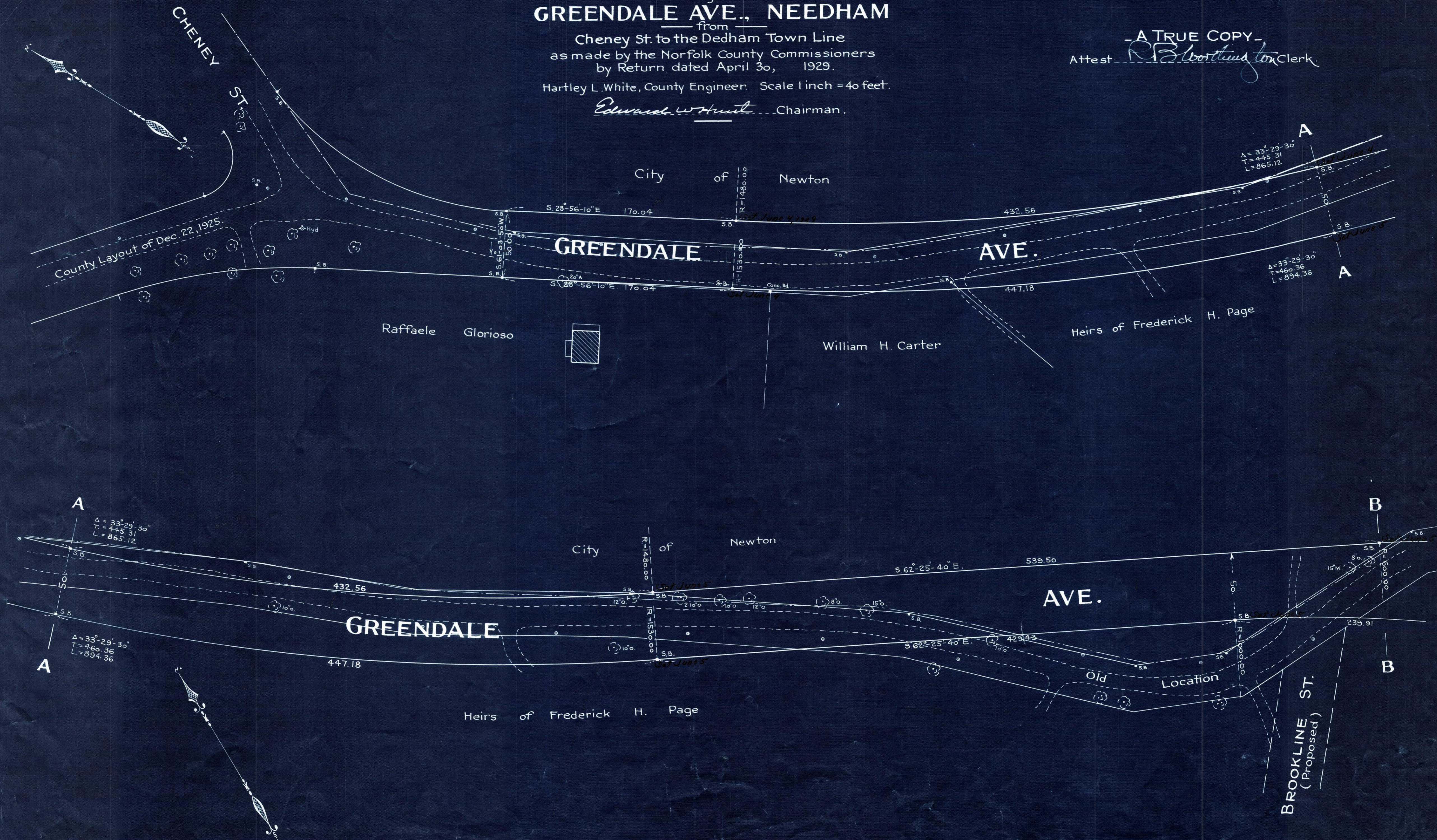
Plan showing the Relocation and Widening of GREENDALE AVE., NEEDHAM

Cheney St. to the Dedham Town Line
as made by the Norfolk County Commissioners
by Return dated April 30, 1929.

Hartley L. White, County Engineer. Scale 1 inch = 40 feet.

Edward W. Hunt Chairman.

- A TRUE COPY -
Attest *R. B. Wortham* Clerk.



Date of Entry June 8, 1929