

Plan showing the Relocation and Widening
of
CENTRAL STREET, AVON
from

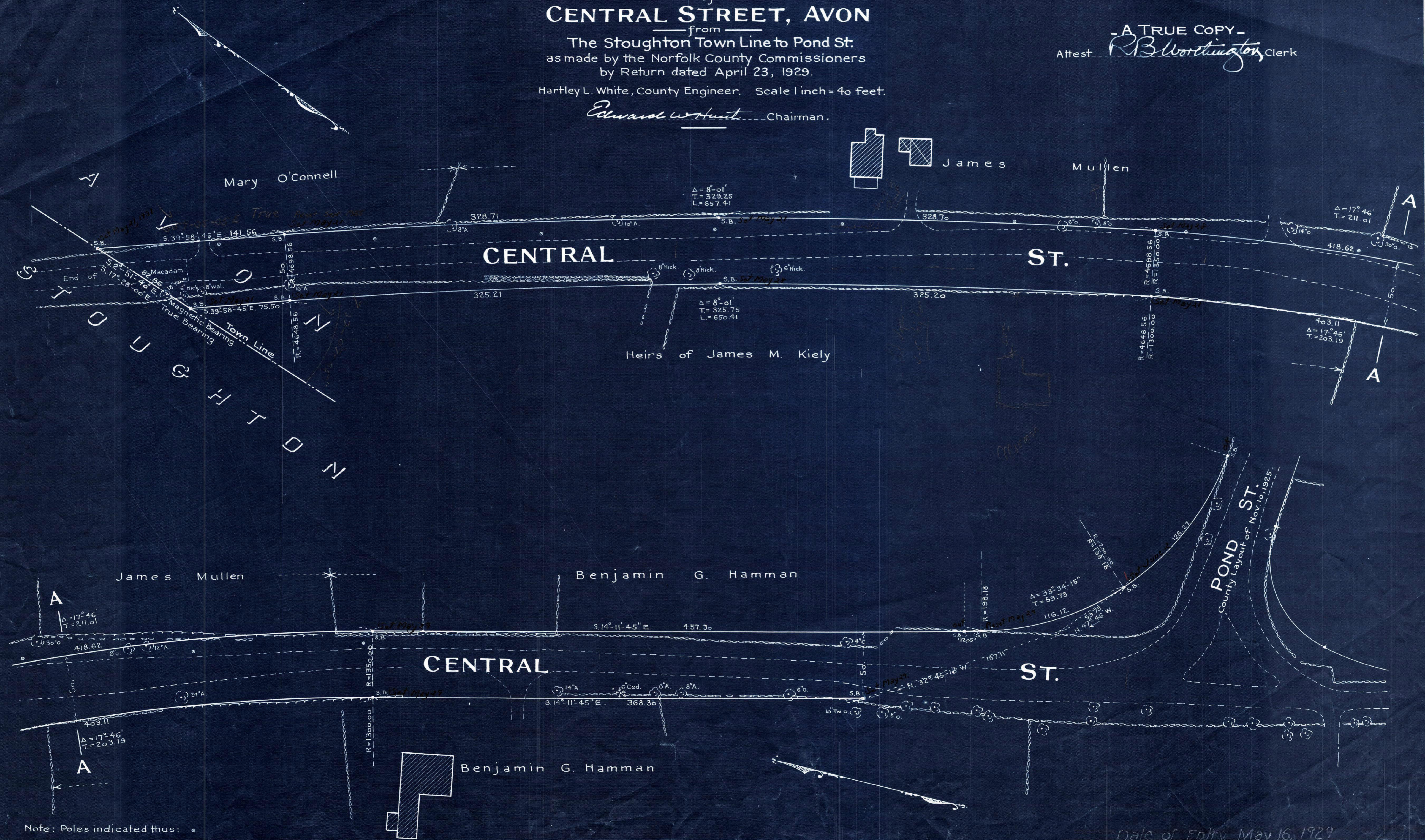
The Stoughton Town Line to Pond St.
as made by the Norfolk County Commissioners
by Return dated April 23, 1929.

Hartley L. White, County Engineer. Scale 1 inch = 40 feet.

Edward W. Hunt Chairman.

- A TRUE COPY -

Attest *R.B. Worthington* Clerk



Note: Poles indicated thus: •

Date of Entry May 16, 1929