

Plan showing the Relocation
of
CANTON STREET, RANDOLPH
from
the Canton Town Line to a point about $\frac{1}{2}$ mile easterly,
as made by the Norfolk County Commissioners
by Return dated February 5, 1929.
Hartley L. White, County Engineer. Scale 1 inch = 40 feet.
Edward W. Hunt, Chairman.

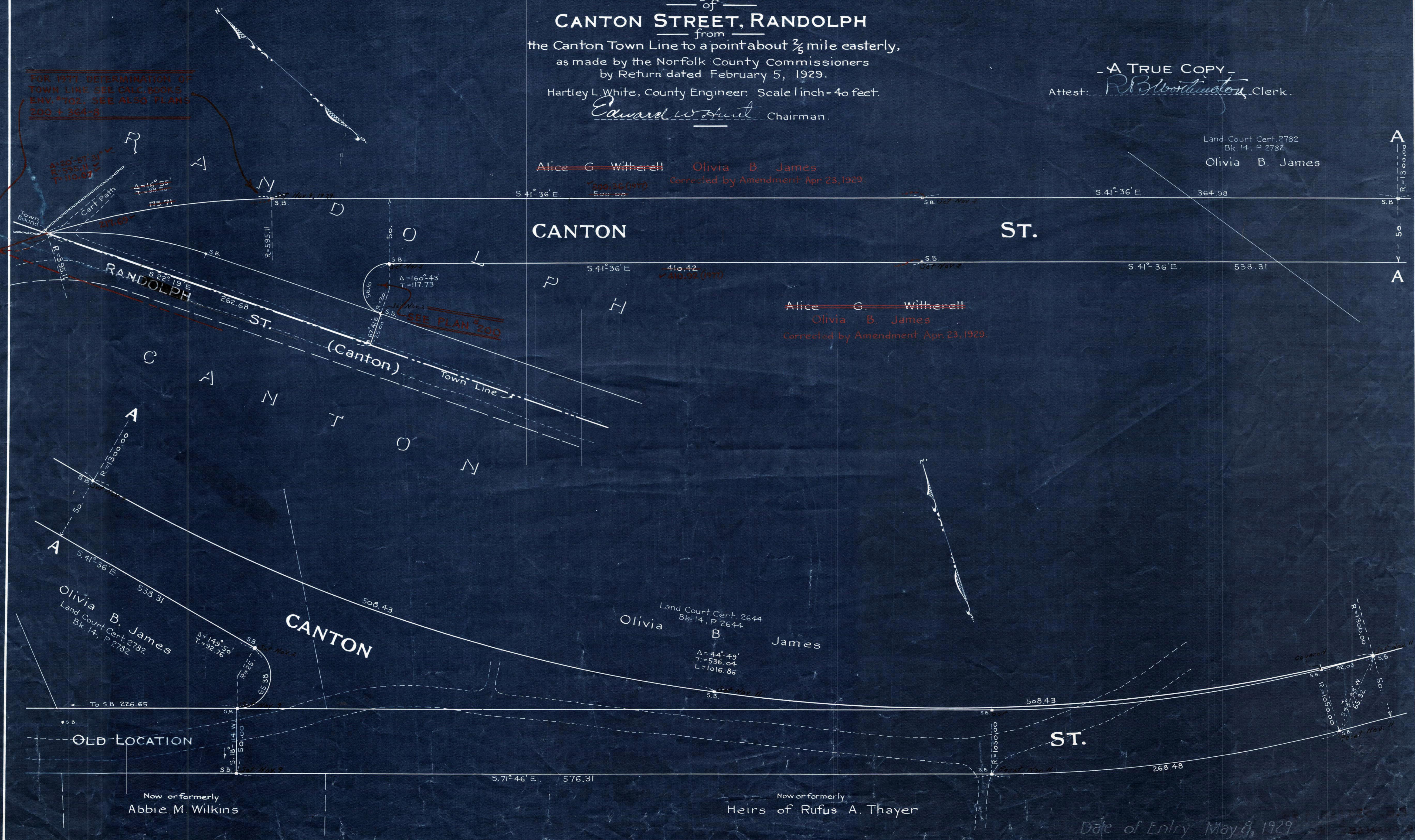
- A TRUE COPY -
Attest: *R. B. Bostwick*, Clerk.

Land Court Cert. 2782
Bk. 14, P. 2782
Olivia B. James

~~Alice G. Witherell~~ ~~Olivia B. James~~
Corrected by Amendment Apr. 23, 1929.

~~Alice G. Witherell~~
~~Olivia B. James~~
Corrected by Amendment Apr. 23, 1929.

FOR 1911 DETERMINATION OF
TOWN LINE. SEE CALC BOOKS
ENV. #102. SEE ALSO PLANS
200 + 204-8



Date of Entry May 8, 1929