

Plan showing the Relocation and Widening
of
WASHINGTON ST., CANTON
between
High St. and Sherman St.

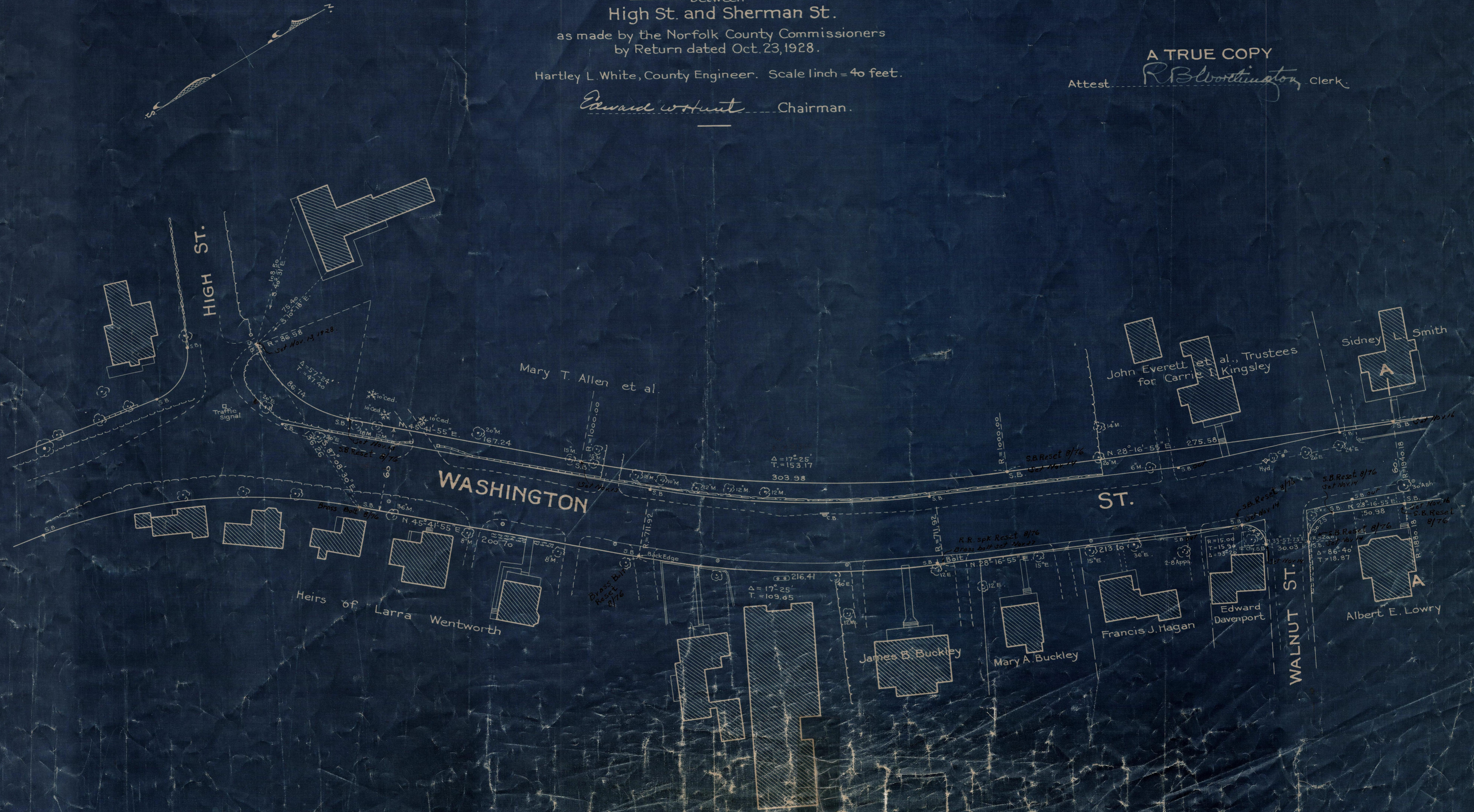
as made by the Norfolk County Commissioners
by Return dated Oct. 23, 1928.

Hartley L. White, County Engineer. Scale 1 inch = 40 feet.

Edward W. Hunt Chairman.

A TRUE COPY

Attest *R. B. Worthington* Clerk.



Note: Poles indicated thus: \odot