

Plan showing the Relocation and Widening
of
GREAT PLAIN AVE., NEEDHAM,
at the Westerly Corner of Chestnut St.

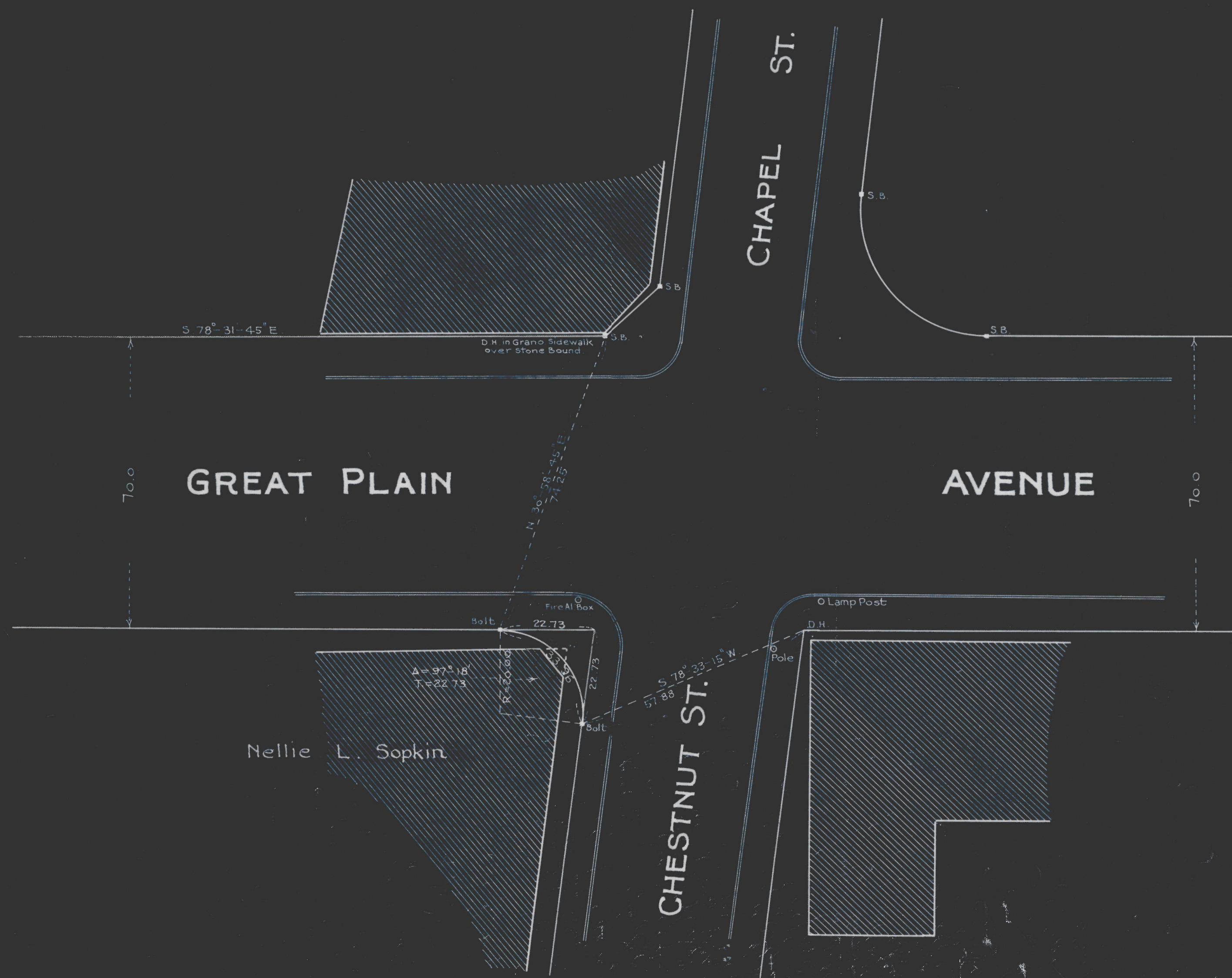
as made by the Norfolk County Commissioners
by Return dated Oct 30, 1928.

Hartley L. White, County Engineer. Scale 1 inch = 20 feet.

Edward W. Hunt Chairman.

- A TRUE COPY -

Attest *R. B. Worthington* Clerk.



No Entry