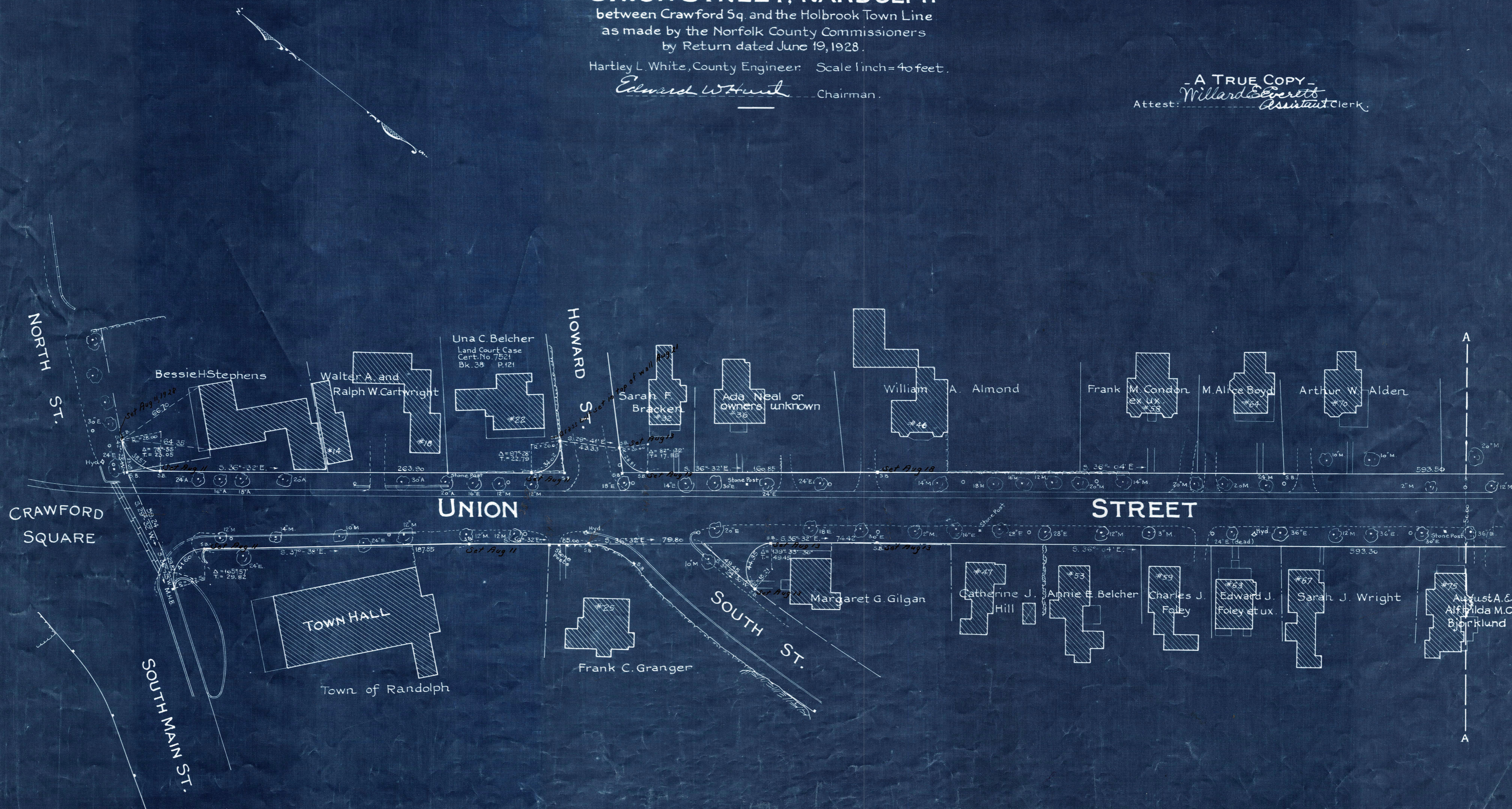


Plan showing the Relocation and Widening  
of  
**UNION STREET, RANDOLPH**  
between Crawford Sq. and the Holbrook Town Line  
as made by the Norfolk County Commissioners  
by Return dated June 19, 1928.

Hartley L. White, County Engineer: Scale 1 inch = 40 feet.

*Edward W. Hunt* Chairman.

- A TRUE COPY -  
*Willard E. Everett*  
Attest: *Assistant Clerk.*



Note - Poles indicated thus:  $\odot$

Date of Entry Aug 1, 1928